



COMMUNITY News



Term 4, 2018, Edition 4

December 2018

Student Injury Insurance

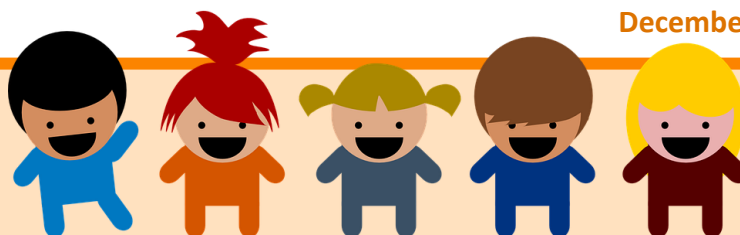
Did you know that the NSW Department of Education (DoE) **does not** provide accident or medical insurance for students enrolled in government schools?

We encourage your School Principal &/or P&C Association to consider purchasing Student Injury Insurance, renewal date is 1 February 2019.

The Student Injury Policy provides cover for students in the event of an injury or accident, and a wide range of benefits are covered 24 hours a day 7 days a week, Australia Wide.

The cost is based on your School's enrolment number and is from as little as \$3.15 to \$4.37 per student, depending on your school size. The cover must be purchased on whole of school basis.

If your school community decides to purchase this Student Injury insurance, please visit www.pandc.org.au/insurance-forms/ or contact our Insurance Representative at Andrews Insurance Services Pty Ltd : **Ela Comertpay** ela@andrewsinsurance.com.au



Creative Kids Program

From 2019, NSW parents, guardians and carers of young people can apply for a \$100 voucher to use for creative and cultural learning activities outside of the school curriculum.

Click [here](#) for more information.

Need easy access to the new P&C Member's Portal?

Set up an affiliate email.

- Reset your passwords**
- Keep documents safe**
- Consistency & easy access**
- 1 terabyte of storage**
- Manage access to Member's Portal**

Click [here](#) to request an affiliate email

P&C Federation Office Christmas Closure



Please be advised the P&C Federation offices will be closed from 4:00PM Friday 21st of December to Friday 18th of January 2018 inclusive.

Our offices will re-open on **Monday 21st January 2019 at 9:00AM.**

NSW P&C Volunteer of the Year 2018

Nominations now open!

(nominations close 31st December, 2018)

www.pandc.org.au

1300 885 982

mail@pandc.org.au

Click [here](#) to unsubscribe or [here](#) to edit your subscription