

The background features large, stylized letters 'R' and 'C' in a dark blue color, set against a lighter blue background. The letters are thick and rounded, with a modern, sans-serif feel. The 'R' is on the left, and the 'C' is on the right, partially overlapping the 'R'.

ASSOCIATION

SUB BRAND IDENTITY
**DELIVERY +
STYLE GUIDE
2023**

P&C Association sub brand

Customise your own P&C Associations brand by **selecting a palette** from the 14 colour palettes provided, **then add your individual school name in Futura Book font**.

We've designed the sub brand in this 'modular' way so each P&C Association can have their own distinct identity.

A brand framework with flexibility for each P&C Association - to work across digital, print, templates and merchandise.

BRAND ASSETS DELIVERED:

- LOGO PACK
 - CMYK Vector EPS,PDF,Ai | PSD, JPEG
 - RGB PNG
- STYLE GUIDE - Indesign & PDF
- LETTERHEAD - Word Template
- MINUTES TEMPLATE - Word Template
- PPT TEMPLATE - Powerpoint
- INVOICE TEMPLATE - Excel Template
- POSTER LAYOUT TEMPLATE - Powerpoint
- AGM TEMPLATE / ANNUAL REPORT TEMPLATE - Word Template
- CERTIFICATES - Indesign

SUPPLIED AS ADOBE ILLUSTRATOR FILES - (VECTOR)
BASIC TEMPLATES:

BADGES (YOU CAN CUSTOMISE AND MAKE YOUR OWN)

- Life Membership Badge
- Outstanding Services Badge
- Secretary & President Public Support Badge

MERCHANDISE - SIMPLY USE THE VECTOR LOGOS SUPPLIED (*IN THE LOGO PACK*) AND GIVE TO YOUR PRINTER OR MERCHANDISE SUPPLIER TO SIZE ACCORDINGLY PER REQUIREMENT.

- T-Shirt
- Polo Shirt
- Bucket Hat
- Lanyards

DELIVERY



DELIVERY FILES:

EACH **LOGO PACK** COMES WITH:

CMYK PRINT FORMATS in:

- VECTOR (AI, PDF, EPS)
- PSD
- JPEG

RGB with TRANSPARENT BACKGROUND in:

- PNG

FOLDERS:

- P&C Assoc AGM Template
- P&C Assoc ANNUAL REPORT Template
- P&C Assoc BADGES Templates
- P&C Assoc CERTIFICATES Templates
- P&C Assoc INVOICE Template
- P&C Assoc LETTERHEAD
- P&C Assoc LOGO PACK
- P&C Assoc MERCHANDISE Templates
- P&C Assoc MINUTES Template
- P&C Assoc POSTER Templates
- P&C Assoc PPT
- P&C Assoc STYLE GUIDE

P&C ASSOC LOGO PACK

>ADOBE ILLUSTRATOR DOCS:

with logos all on separate artboards in one document:

- P&CAssoc_LOGO_1.ai
- P&CAssoc_LOGO_1.pdf

CMYK JPEG

>1 COL LOGO

- P&CAssoc_LOGO_1_Black.jpg
- P&CAssoc_LOGO_1_PMS 106.jpg
- P&CAssoc_LOGO_1_PMS 109.jpg
- P&CAssoc_LOGO_1_PMS 205.jpg
- P&CAssoc_LOGO_1_PMS 206.jpg
- P&CAssoc_LOGO_1_PMS 262.jpg
- P&CAssoc_LOGO_1_PMS 265.jpg
- P&CAssoc_LOGO_1_PMS 267.jpg
- P&CAssoc_LOGO_1_PMS 328.jpg
- P&CAssoc_LOGO_1_PMS 330.jpg
- P&CAssoc_LOGO_1_PMS 428.jpg
- P&CAssoc_LOGO_1_PMS 574.jpg
- P&CAssoc_LOGO_1_PMS 576.jpg
- P&CAssoc_LOGO_1_PMS 577.jpg
- P&CAssoc_LOGO_1_PMS 1235.jpg
- P&CAssoc_LOGO_1_PMS 1495.jpg
- P&CAssoc_LOGO_1_PMS 2593.jpg
- P&CAssoc_LOGO_1_PMS 2736.jpg
- P&CAssoc_LOGO_1_PMS 3145.jpg
- P&CAssoc_LOGO_1_PMS 3252.jpg
- P&CAssoc_LOGO_1_PMS 3975.jpg
- P&CAssoc_LOGO_1_PMS 3985.jpg
- P&CAssoc_LOGO_1_PMS 3995.jpg
- P&CAssoc_LOGO_1_PMS 7433.jpg
- P&CAssoc_LOGO_1_PMS 7452.jpg
- P&CAssoc_LOGO_1_PMS 7453.jpg
- P&CAssoc_LOGO_1_PMS 7454.jpg
- P&CAssoc_LOGO_1_PMS 7455.jpg
- P&CAssoc_LOGO_1_PMS 7462.jpg
- P&CAssoc_LOGO_1_PMS 7465.jpg
- P&CAssoc_LOGO_1_PMS 7470.jpg
- P&CAssoc_LOGO_1_PMS 7712.jpg
- P&CAssoc_LOGO_1_PMS Warm Red.jpg
- P&CAssoc_LOGO_1.jpg

>3 COL LOGO

- P&CAssoc_LOGO_1_01.jpg
- P&CAssoc_LOGO_1_02.jpg
- P&CAssoc_LOGO_1_03.jpg
- P&CAssoc_LOGO_1_04.jpg

- P&CAssoc_LOGO_1_05.jpg
- P&CAssoc_LOGO_1_06.jpg
- P&CAssoc_LOGO_1_07.jpg
- P&CAssoc_LOGO_1_08.jpg
- P&CAssoc_LOGO_1_09.jpg
- P&CAssoc_LOGO_1_10.jpg
- P&CAssoc_LOGO_1_11.jpg
- P&CAssoc_LOGO_1_12.jpg
- P&CAssoc_LOGO_1_13.jpg
- P&CAssoc_LOGO_1_14.jpg
- P&CAssoc_LOGO_1_15.jpg
- P&CAssoc_LOGO_1_16.jpg
- P&CAssoc_LOGO_1_17.jpg
- P&CAssoc_LOGO_1_18.jpg
- P&CAssoc_LOGO_1_19.jpg
- P&CAssoc_LOGO_1_20.jpg

CMYK PSD

>3 COL LOGO

- P&CAssoc_LOGO_1_White.psd
- P&CAssoc_LOGO_1_PMS Warm Red.psd
- P&CAssoc_LOGO_1_PMS 7712.psd
- P&CAssoc_LOGO_1_PMS 7710.psd
- P&CAssoc_LOGO_1_PMS 7570.psd
- P&CAssoc_LOGO_1_PMS 7462.psd
- P&CAssoc_LOGO_1_PMS 7455.psd
- P&CAssoc_LOGO_1_PMS 7454.psd
- P&CAssoc_LOGO_1_PMS 7453.psd
- P&CAssoc_LOGO_1_PMS 7452.psd
- P&CAssoc_LOGO_1_PMS 3995.psd
- P&CAssoc_LOGO_1_PMS 7433.psd
- P&CAssoc_LOGO_1_PMS 3985.psd
- P&CAssoc_LOGO_1_PMS 3975.psd
- P&CAssoc_LOGO_1_PMS 3145.psd
- P&CAssoc_LOGO_1_PMS 3252.psd
- P&CAssoc_LOGO_1_PMS 2593.psd
- P&CAssoc_LOGO_1_PMS 2736.psd
- P&CAssoc_LOGO_1_PMS 1235.psd
- P&CAssoc_LOGO_1_PMS 1495.psd
- P&CAssoc_LOGO_1_PMS 576.psd
- P&CAssoc_LOGO_1_PMS 577.psd
- P&CAssoc_LOGO_1_PMS 574.psd
- P&CAssoc_LOGO_1_PMS 428.psd
- P&CAssoc_LOGO_1_PMS 328.psd
- P&CAssoc_LOGO_1_PMS 330.psd
- P&CAssoc_LOGO_1_PMS 265.psd
- P&CAssoc_LOGO_1_PMS 267.psd
- P&CAssoc_LOGO_1_PMS 262.psd
- P&CAssoc_LOGO_1_PMS 206.psd
- P&CAssoc_LOGO_1_PMS 205.psd
- P&CAssoc_LOGO_1_PMS 109.psd
- P&CAssoc_LOGO_1_PMS 106.psd
- P&CAssoc_LOGO_1_Black.psd

>3 COL LOGO

- P&CAssoc_LOGO_1_20.psd
- P&CAssoc_LOGO_1_19.psd
- P&CAssoc_LOGO_1_18.psd
- P&CAssoc_LOGO_1_17.psd
- P&CAssoc_LOGO_1_16.psd
- P&CAssoc_LOGO_1_15.psd
- P&CAssoc_LOGO_1_14.psd
- P&CAssoc_LOGO_1_13.psd
- P&CAssoc_LOGO_1_12.psd
- P&CAssoc_LOGO_1_11.psd
- P&CAssoc_LOGO_1_10.psd
- P&CAssoc_LOGO_1_08.psd
- P&CAssoc_LOGO_1_09.psd
- P&CAssoc_LOGO_1_07.psd
- P&CAssoc_LOGO_1_06.psd
- P&CAssoc_LOGO_1_05.psd
- P&CAssoc_LOGO_1_04.psd
- P&CAssoc_LOGO_1_03.psd
- P&CAssoc_LOGO_1_02.psd
- P&CAssoc_LOGO_1_01.psd

EPS

- P&CAssoc_LOGO_1.eps

>1 COL LOGO

- P&CAssoc_LOGO_1_Black.eps
- P&CAssoc_LOGO_1_PMS 106.eps
- P&CAssoc_LOGO_1_PMS 109.eps
- P&CAssoc_LOGO_1_PMS 205.eps
- P&CAssoc_LOGO_1_PMS 206.eps
- P&CAssoc_LOGO_1_PMS 262.eps
- P&CAssoc_LOGO_1_PMS 267.eps
- P&CAssoc_LOGO_1_PMS 328.eps
- P&CAssoc_LOGO_1_PMS 330.eps
- P&CAssoc_LOGO_1_PMS 428.eps
- P&CAssoc_LOGO_1_PMS 574.eps
- P&CAssoc_LOGO_1_PMS 576.eps
- P&CAssoc_LOGO_1_PMS 577.eps
- P&CAssoc_LOGO_1_PMS 1235.eps
- P&CAssoc_LOGO_1_PMS 1495.eps
- P&CAssoc_LOGO_1_PMS 2593.eps
- P&CAssoc_LOGO_1_PMS 2736.eps
- P&CAssoc_LOGO_1_PMS 3145.eps
- P&CAssoc_LOGO_1_PMS 3252.eps
- P&CAssoc_LOGO_1_PMS 3975.eps
- P&CAssoc_LOGO_1_PMS 3985.eps
- P&CAssoc_LOGO_1_PMS 3995.eps
- P&CAssoc_LOGO_1_PMS 7433.eps

- P&CAssoc_LOGO_1_PMS 7452.eps
- P&CAssoc_LOGO_1_PMS 7453.eps
- P&CAssoc_LOGO_1_PMS 7454.eps
- P&CAssoc_LOGO_1_PMS 7455.eps
- P&CAssoc_LOGO_1_PMS 7462.eps
- P&CAssoc_LOGO_1_PMS 7570.eps
- P&CAssoc_LOGO_1_PMS 7710.eps
- P&CAssoc_LOGO_1_PMS 7712.eps
- P&CAssoc_LOGO_1_PMS Warm Red.eps
- P&CAssoc_LOGO_1_White.eps

>3 COL LOGO

- P&CAssoc_LOGO_1_01.eps
- P&CAssoc_LOGO_1_02.eps
- P&CAssoc_LOGO_1_03.eps
- P&CAssoc_LOGO_1_04.eps
- P&CAssoc_LOGO_1_05.eps
- P&CAssoc_LOGO_1_06.eps
- P&CAssoc_LOGO_1_07.eps
- P&CAssoc_LOGO_1_08.eps
- P&CAssoc_LOGO_1_09.eps
- P&CAssoc_LOGO_1_10.eps
- P&CAssoc_LOGO_1_11.eps
- P&CAssoc_LOGO_1_12.eps
- P&CAssoc_LOGO_1_13.eps
- P&CAssoc_LOGO_1_14.eps
- P&CAssoc_LOGO_1_15.eps
- P&CAssoc_LOGO_1_16.eps
- P&CAssoc_LOGO_1_17.eps
- P&CAssoc_LOGO_1_18.eps
- P&CAssoc_LOGO_1_19.eps
- P&CAssoc_LOGO_1_20.eps

RGB PNG WITH TRANSPARENT BACKGROUND

>1 COL LOGO

- P&CAssoc_LOGO_1_Black.png
- P&CAssoc_LOGO_1_PMS 106.png
- P&CAssoc_LOGO_1_PMS 109.png
- P&CAssoc_LOGO_1_PMS 205.png
- P&CAssoc_LOGO_1_PMS 206.png
- P&CAssoc_LOGO_1_PMS 262.png
- P&CAssoc_LOGO_1_PMS 265.png
- P&CAssoc_LOGO_1_PMS 267.png
- P&CAssoc_LOGO_1_PMS 328.png
- P&CAssoc_LOGO_1_PMS 330.png
- P&CAssoc_LOGO_1_PMS 428.png
- P&CAssoc_LOGO_1_PMS 574.png
- P&CAssoc_LOGO_1_PMS 576.png

- P&CAssoc_LOGO_1_PMS 577.png
- P&CAssoc_LOGO_1_PMS 1235.png
- P&CAssoc_LOGO_1_PMS 1495.png
- P&CAssoc_LOGO_1_PMS 2593.png
- P&CAssoc_LOGO_1_PMS 2736.png
- P&CAssoc_LOGO_1_PMS 3145.png
- P&CAssoc_LOGO_1_PMS 3252.png
- P&CAssoc_LOGO_1_PMS 3975.png
- P&CAssoc_LOGO_1_PMS 3985.png
- P&CAssoc_LOGO_1_PMS 3995.png
- P&CAssoc_LOGO_1_PMS 7433.png
- P&CAssoc_LOGO_1_PMS 7452.png
- P&CAssoc_LOGO_1_PMS 7453.png
- P&CAssoc_LOGO_1_PMS 7454.png
- P&CAssoc_LOGO_1_PMS 7455.png
- P&CAssoc_LOGO_1_PMS 7462.png
- P&CAssoc_LOGO_1_PMS 7570.png
- P&CAssoc_LOGO_1_PMS 7710.png
- P&CAssoc_LOGO_1_PMS 7712.png
- P&CAssoc_LOGO_1_PMS Warm Red.png
- P&CAssoc_LOGO_1_White.png

>3 COL LOGO

- P&CAssoc_LOGO_1.psd
- P&CAssoc_LOGO_1.png
- P&CAssoc_LOGO_1_20.png
- P&CAssoc_LOGO_1_19.png
- P&CAssoc_LOGO_1_18.png
- P&CAssoc_LOGO_1_17.png
- P&CAssoc_LOGO_1_16.png
- P&CAssoc_LOGO_1_15.png
- P&CAssoc_LOGO_1_13.png
- P&CAssoc_LOGO_1_14.png
- P&CAssoc_LOGO_1_11.png
- P&CAssoc_LOGO_1_12.png
- P&CAssoc_LOGO_1_10.png
- P&CAssoc_LOGO_1_09.png
- P&CAssoc_LOGO_1_08.png
- P&CAssoc_LOGO_1_07.png
- P&CAssoc_LOGO_1_06.png
- P&CAssoc_LOGO_1_05.png
- P&CAssoc_LOGO_1_04.png
- P&CAssoc_LOGO_1_03.png
- P&CAssoc_LOGO_1_02.png
- P&CAssoc_LOGO_1_01.png

DELIVERY FILES:

FOLDERS:

P&C Assoc AGM Template
P&C Assoc ANNUAL REPORT Template
P&C Assoc BADGES Templates
P&C Assoc CERTIFICATES Templates
P&C Assoc INVOICE Template
P&C Assoc LETTERHEAD
P&C Assoc LOGO PACK
P&C Assoc MERCHANDISE Templates
P&C Assoc MINUTES Template
P&C Assoc POSTER Templates
P&C Assoc PPT
P&C Assoc STYLE GUIDE

P&C ASSOC AGM TEMPLATE

- Annual_general_meeting_agenda_template_01.docx
- Annual_general_meeting_agenda_template_01.pdf
- Annual_general_meeting_agenda_template_02.docx
- Annual_general_meeting_agenda_template_03.docx

P&C ASSOC ANNUAL REPORT TEMPLATE

- AltCoverOption.docx
- AltCoverOption.pdf
- P&C_AnnualReportExample.docx
- P&C_AnnualReportExample.dotx
- P&C_AnnualReportExample.pdf
- P&CAs_AnnualReport_inWord.docx
- P&CAs_AnnualReportCoverExample_inWord.docx
- P&CAs_AnnualReportCoverExample_inWord.pdf

P&C ASSOC BADGES TEMPLATES

- P&C_Assoc_BADGES_Logo01_fin_Badge Sizes.eps
- P&C_Assoc_BADGES_Logo01_fin_Lifetime Membership 1 .eps
- P&C_Assoc_BADGES_Logo01_fin_Lifetime Membership 2 .eps
- P&C_Assoc_BADGES_Logo01_fin_Lifetime Membership 3-06.eps
- P&C_Assoc_BADGES_Logo01_fin_Lifetime Membership 3-10.eps
- P&C_Assoc_BADGES_Logo01_fin_Lifetime Membership 4.eps
- P&C_Assoc_BADGES_Logo01_fin_Office Bearer 2.eps
- P&C_Assoc_BADGES_Logo01_fin_Office Bearer .eps
- P&C_Assoc_BADGES_Logo01_fin_Outstanding Services .eps
- P&C_Assoc_BADGES_Logo01_fin_Pres Public Support 2.eps
- P&C_Assoc_BADGES_Logo01_fin_Pres Public Support .eps
- P&C_Assoc_BADGES_Logo01_fin.ai
- P&C_Assoc_BADGES_Logo01_fin.eps
- P&C_Assoc_BADGES_Logo01_fin.pdf
- P&C_Assoc_BADGES_Logo01.ai

P&C ASSOC CERTIFICATES TEMPLATES

P&C_ASSOC_A4_CERTIFICATE APPRECIATION FOLDER

- P&C_Assoc_A4_Certificate Appreciation.pdf
- P&C_Assoc_A4_Certificate Appreciation.indd
- P&C_Assoc_A4_Certificate Appreciation.idml
- Links
- Document fonts

>P&C_ASSOC_A4_LIFE MEMBERSHIP CERTIFICATE FOLDER

- P&C_Assoc_A4_Life Membership Certificate.pdf
- P&C_Assoc_A4_Life Membership Certificate.indd
- P&C_Assoc_A4_Life Membership Certificate.idml
- Links
- Document fonts

P&C ASSOC INVOICE TEMPLATE

- Printer-Friendly-Excel-Invoice-example.pdf
- Printer-Friendly-Excel-Invoice-example.xlsx
- Printer-Friendly-Excel-Invoice-Template-1.xltx

P&C ASSOC LETTERHEAD

- LetterheadinWord_Example.docx
- LetterheadinWord_Example.pdf

P&C ASSOC LOGO PACK

(SEE PREVIOUS PAGE)

P&C ASSOC MERCHANDISE -

USE VECTOR LOGOS (AI, EPS, PDF in LOGO PACK)

P&C ASSOC MINUTES TEMPLATE

- minutesAGM_01.docx
- minutesAGM_01.pdf
- minutesAGM_02.docx

P&C ASSOC POSTER TEMPLATES

- A3 Poster design_master_preview.pdf
- A3 Poster design.pptx

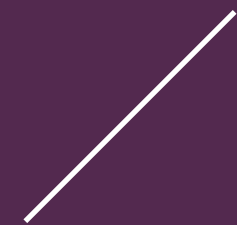
P&C ASSOC PPT

- Presentation design 1920x1080_preview.pdf
- Presentation design 1920x1080.pptx

P&C_ASSOC_STYLE GUIDE

- P&C_Assoc_Logo01_STYLE GUIDE.pdf

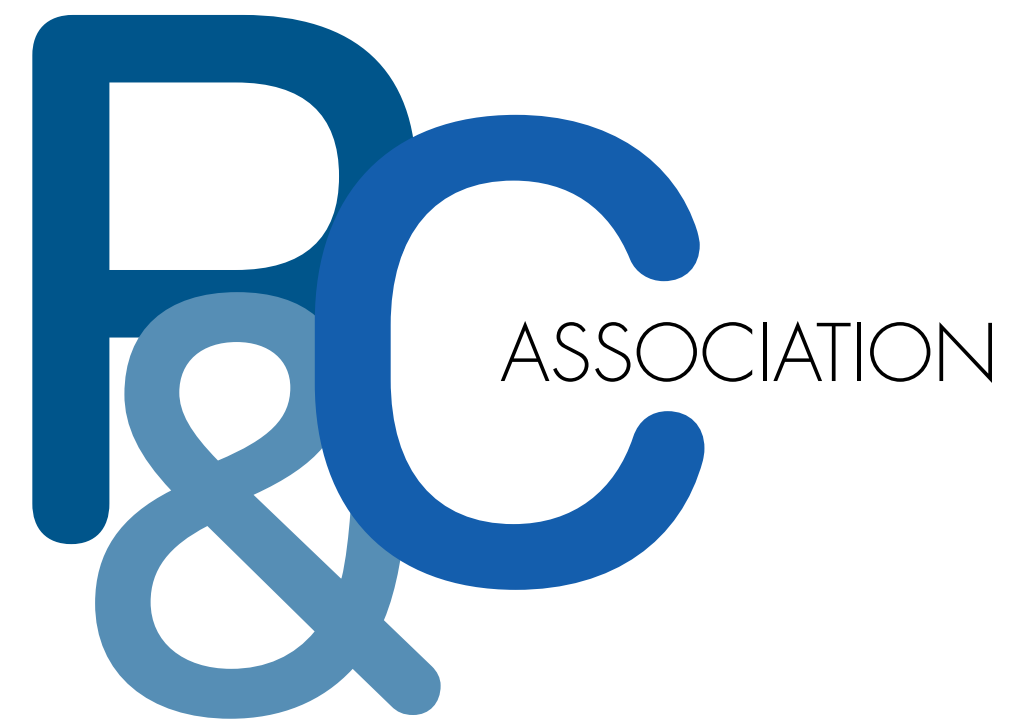
STYLE GUIDE



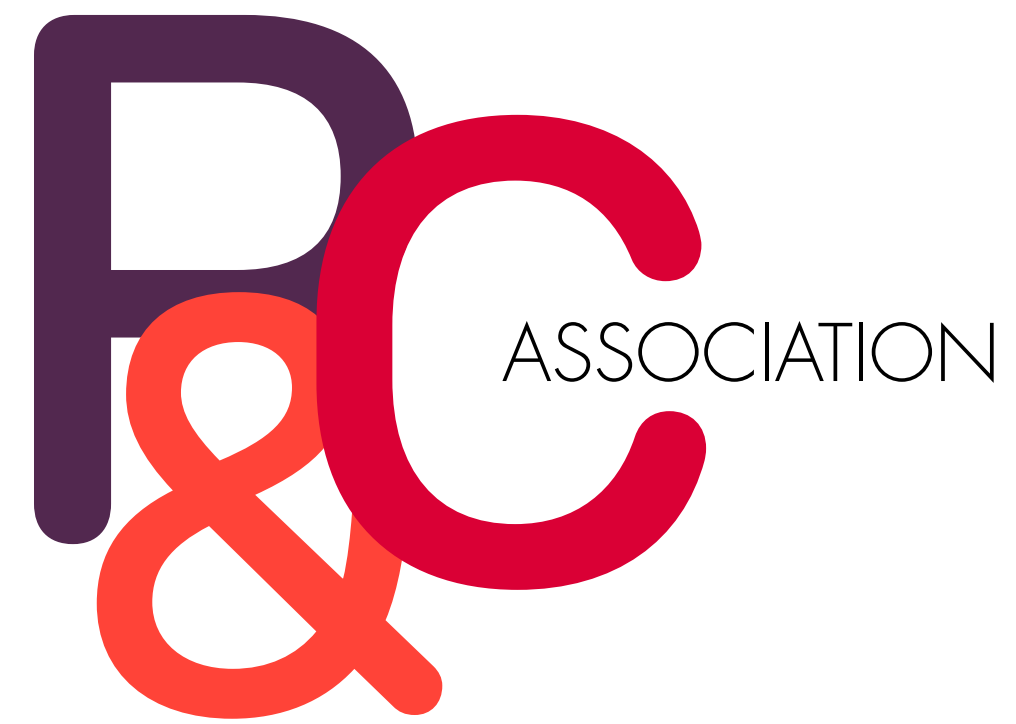
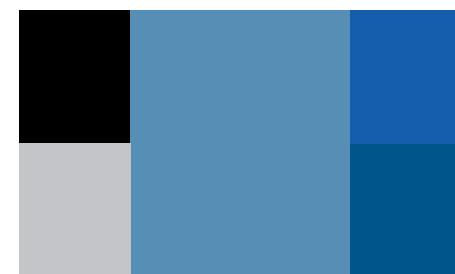
01. OUR LOGO

MONO OR
3 COLOUR

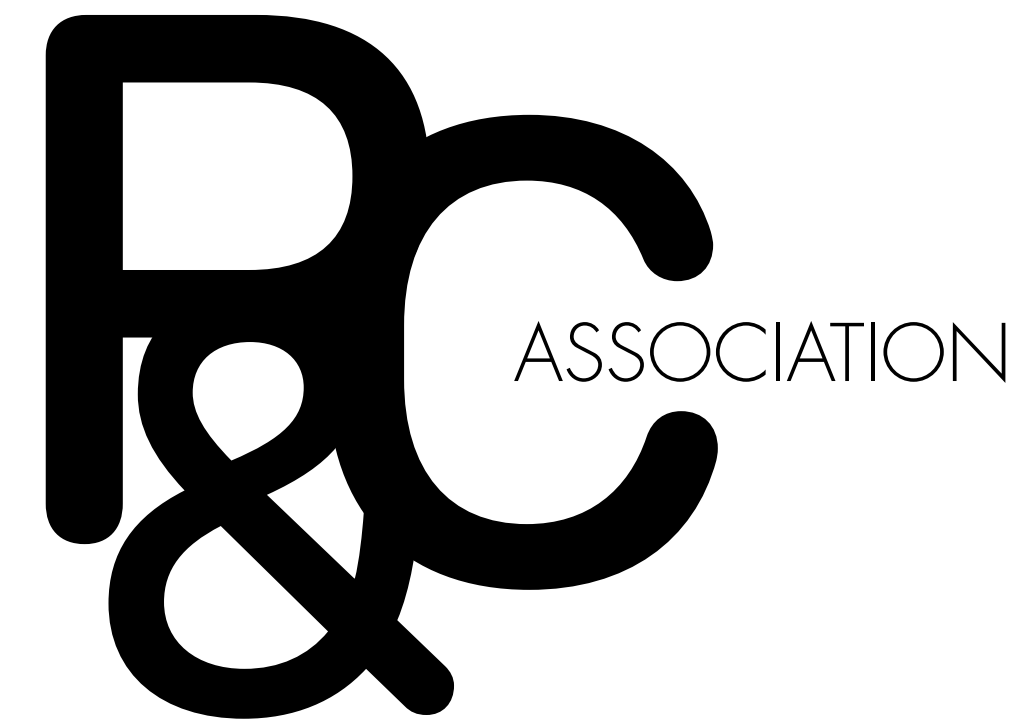
Please choose from the 20
3-colour logos provided
to suit the colour palette
you have chosen.



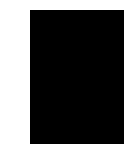
smallest size
30mm wide



smallest size
30mm wide

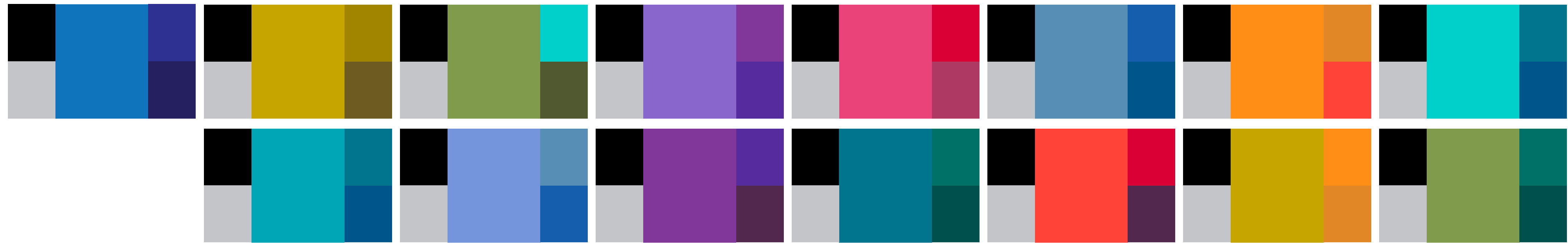
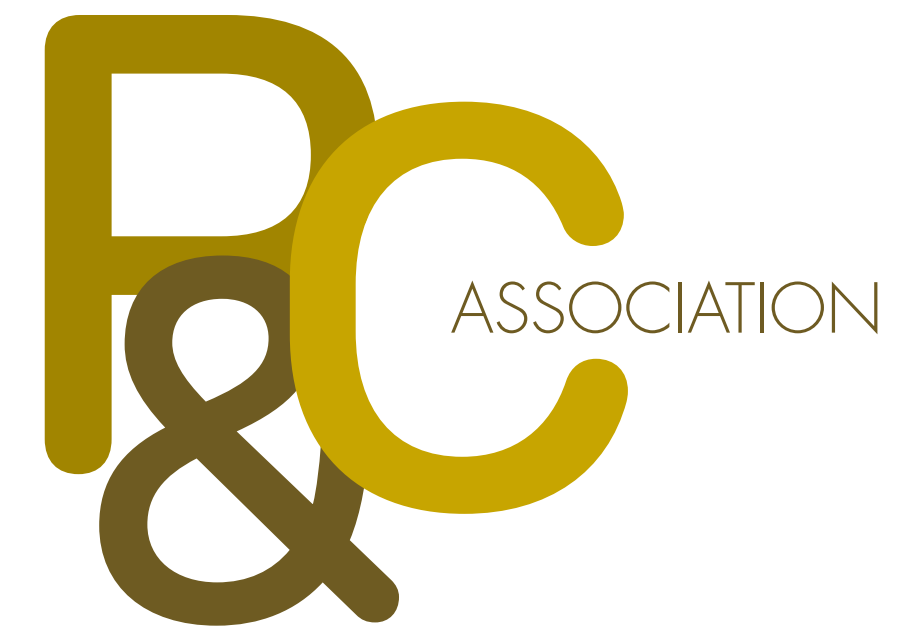
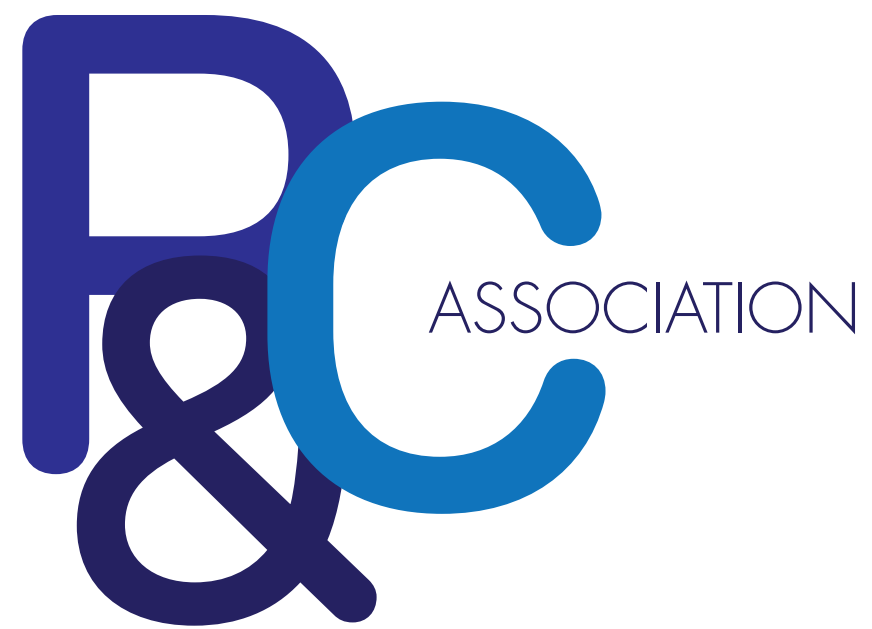


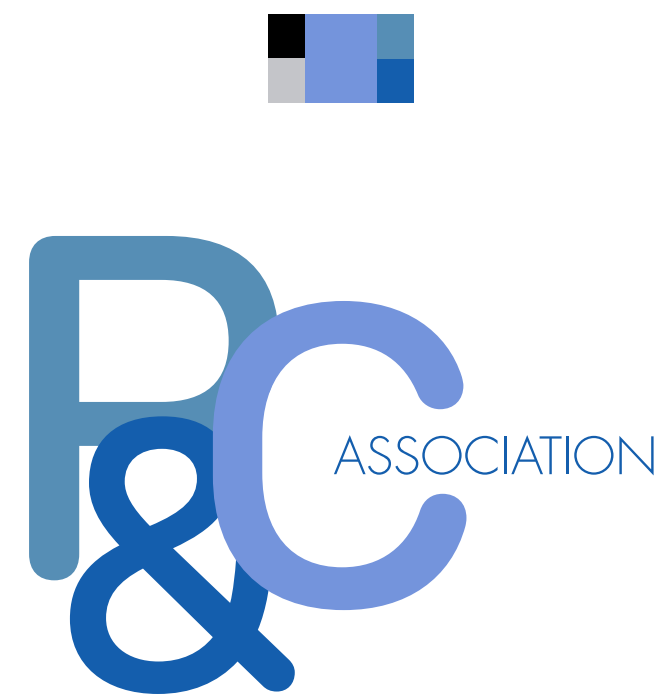
smallest size
30mm wide



"LINK"

THREE COLOURED LOGO
USING COLOUR HUES



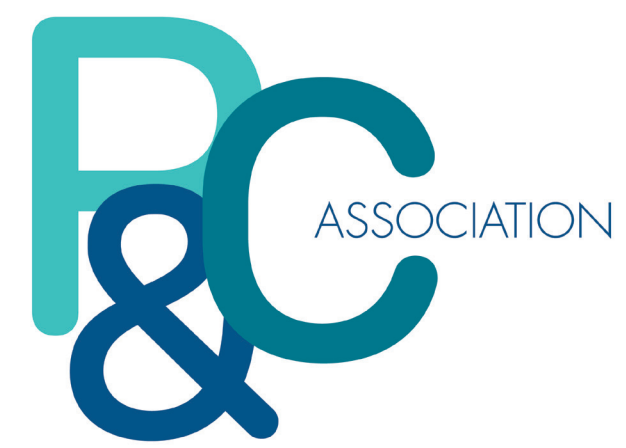
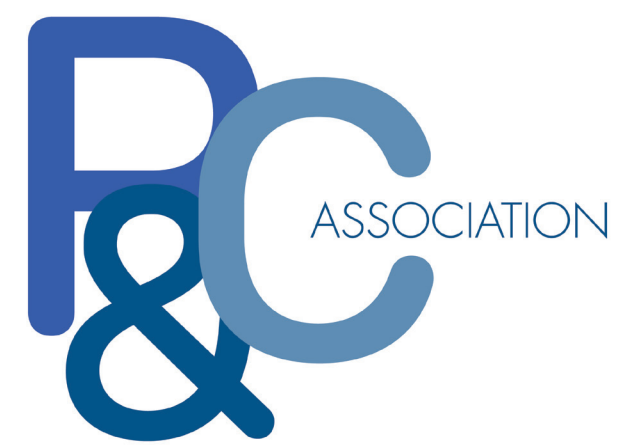
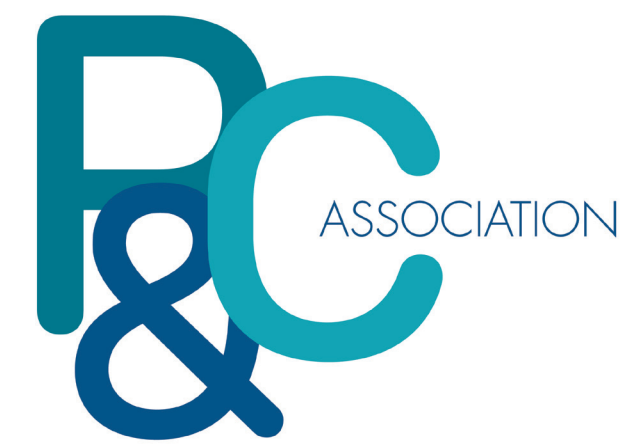
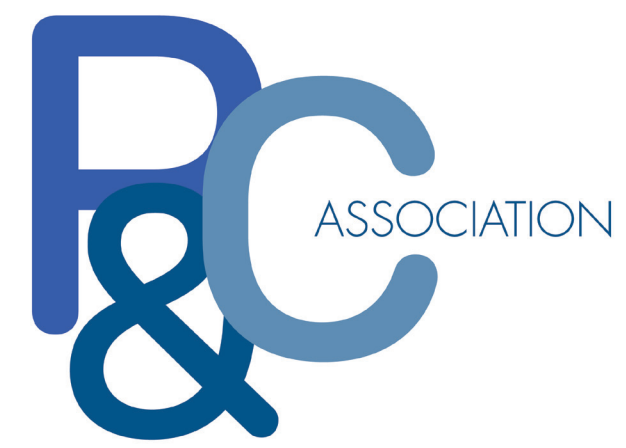
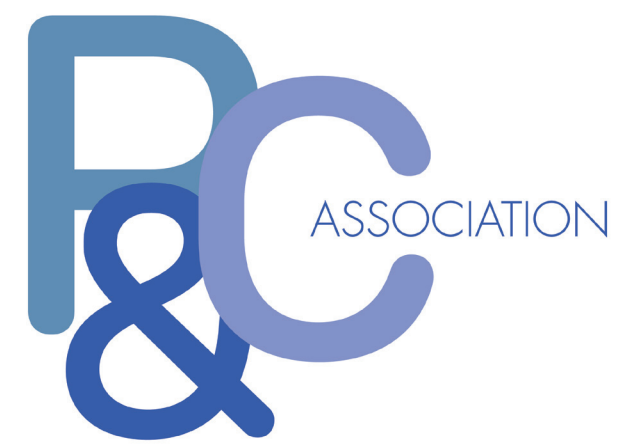


- Our Logo
- Our Typography
- Our Colours
- Our Photography
- Our Brand in Use

01. OUR LOGO

3 COLOUR
LOGO
x 20 options

CHOOSE YOUR LOGO
TO SUIT YOUR CHOSEN
COLOUR PALETTE



Our Logo
Our Typography
Our Colours
Our Photography
Our Brand in Use

01. OUR LOGO

MONO LOGO
x 34 options

CHOOSE YOUR LOGO
TO SUIT YOUR CHOSEN
COLOUR PALETTE



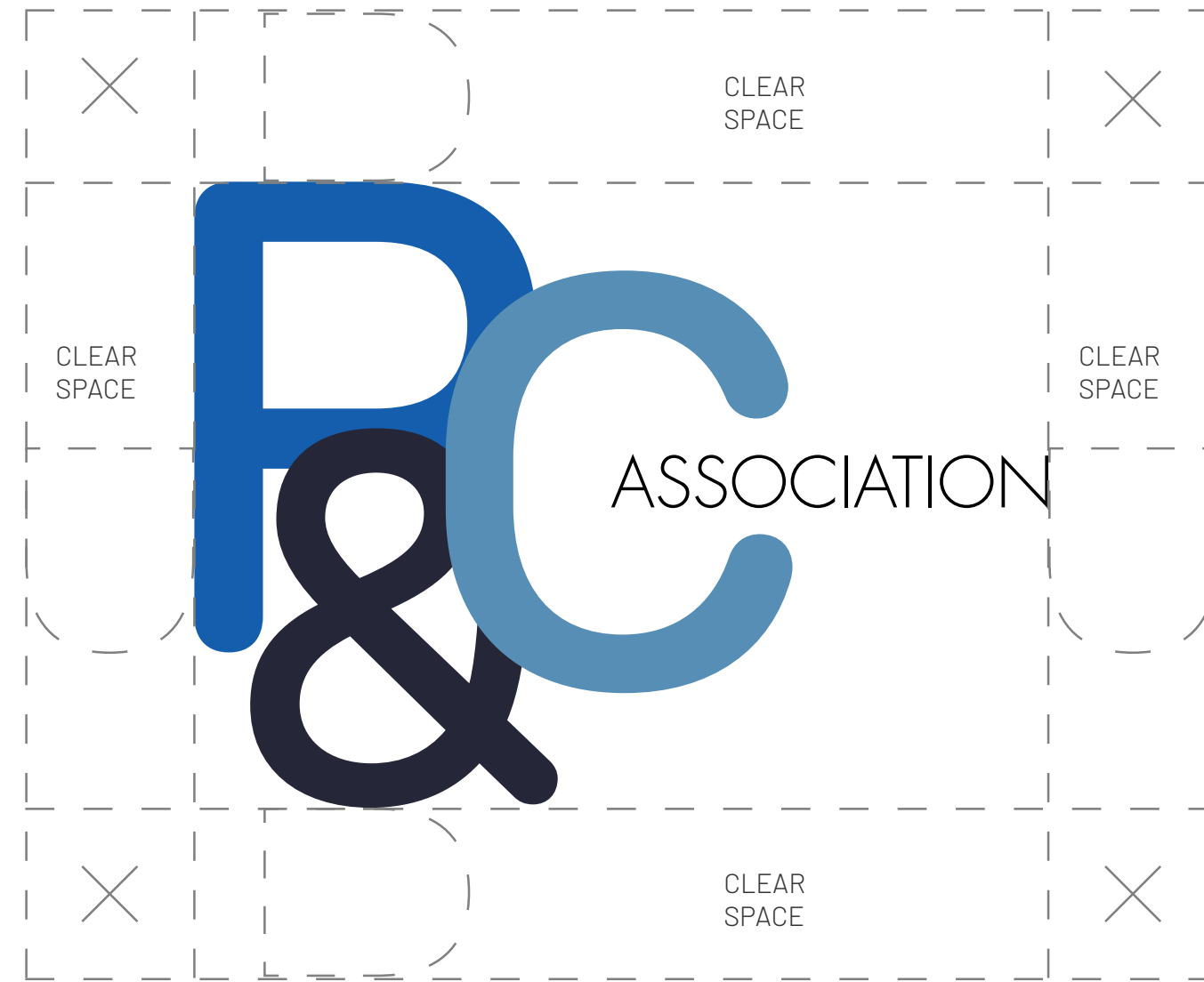
01. OUR LOGO

CLEAR SPACE

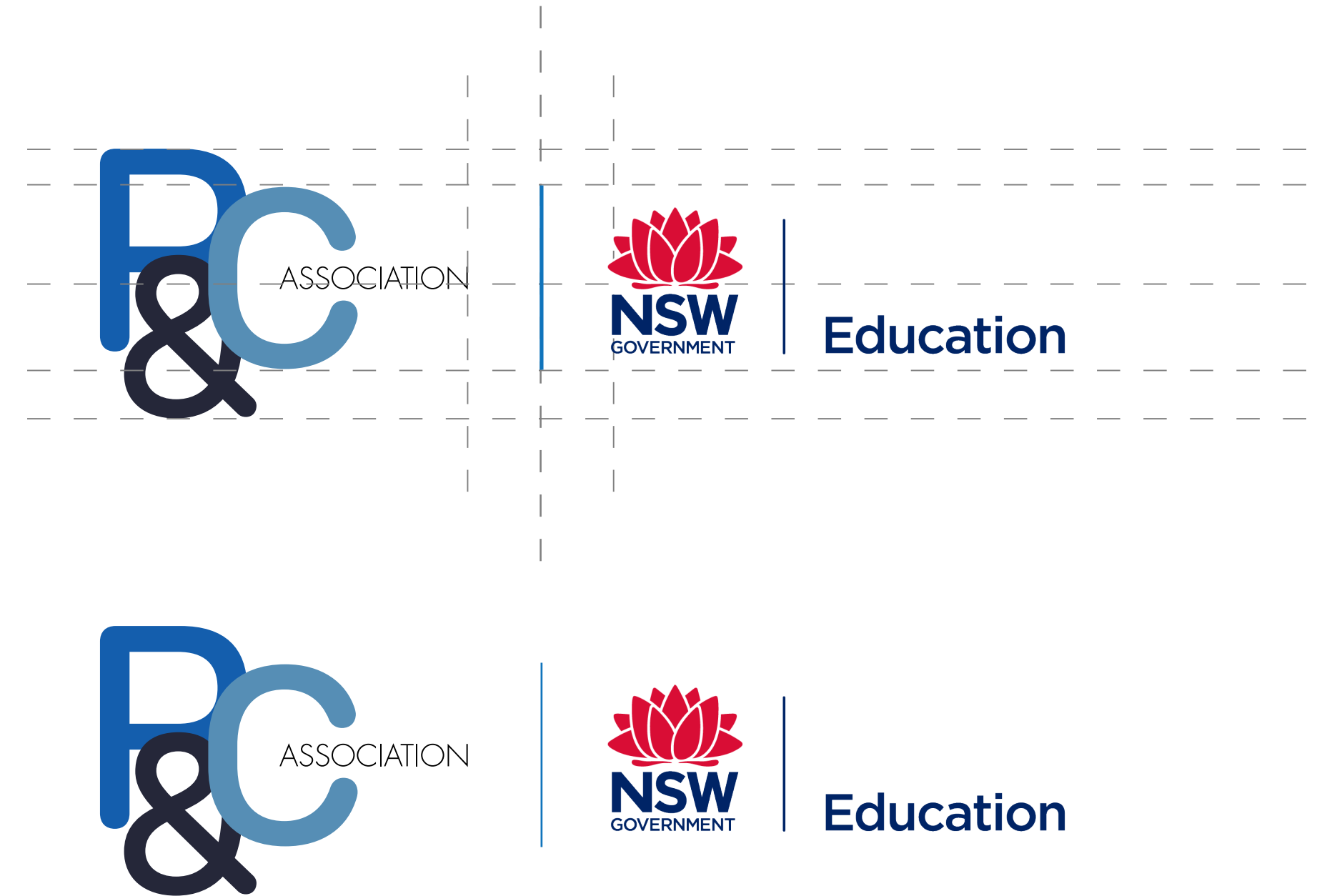
Please ensure there is enough space allocated around the logo so that it never appears cramped by other elements.

This is a guide only - the designer should use their discretion to ensure that the logo is always balanced and given room on the page.

Note: All LOGOS in the LOGO PACK have been supplied as files with clearspace.



X RECOMMENDED
CLEAR SPACE
INDICATOR



LOCK UP FOR
PARTNER LOGOS

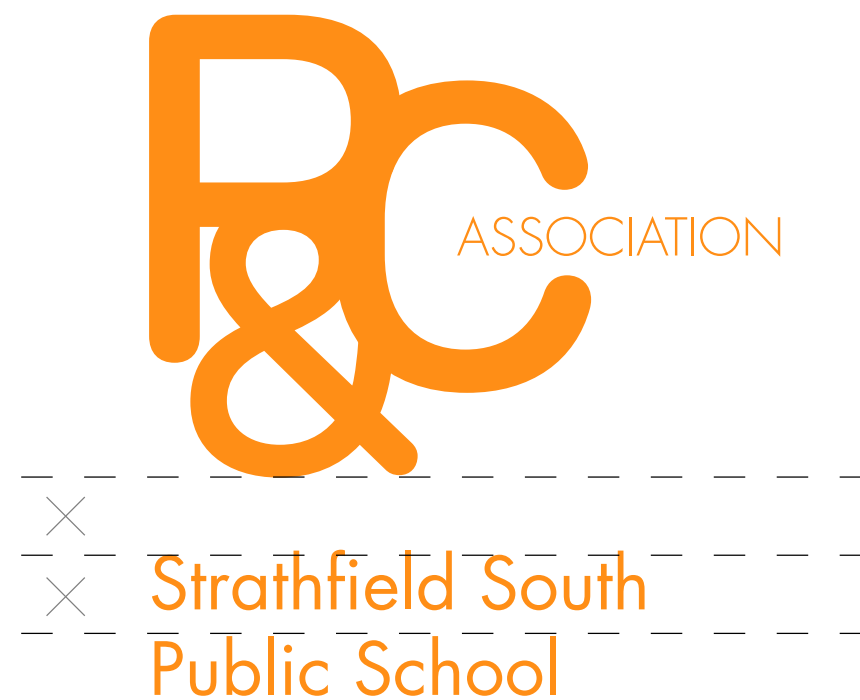
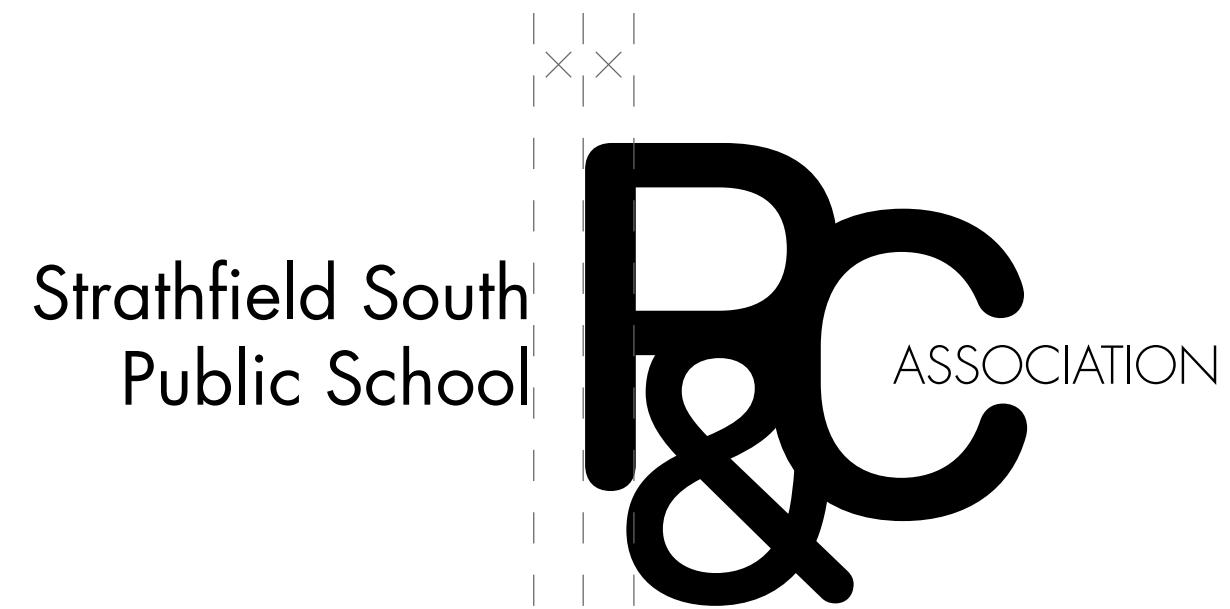
01. OUR LOGO

WITH
SCHOOL
NAMES

3 typesetting options for you to pair the BRAND MARK with the SCHOOL NAME in FUTURA FONT

Note: The School Name always occurs in plain FUTURA BOOK font - colour matched to the brand mark.

✕ SPACE INDICATOR

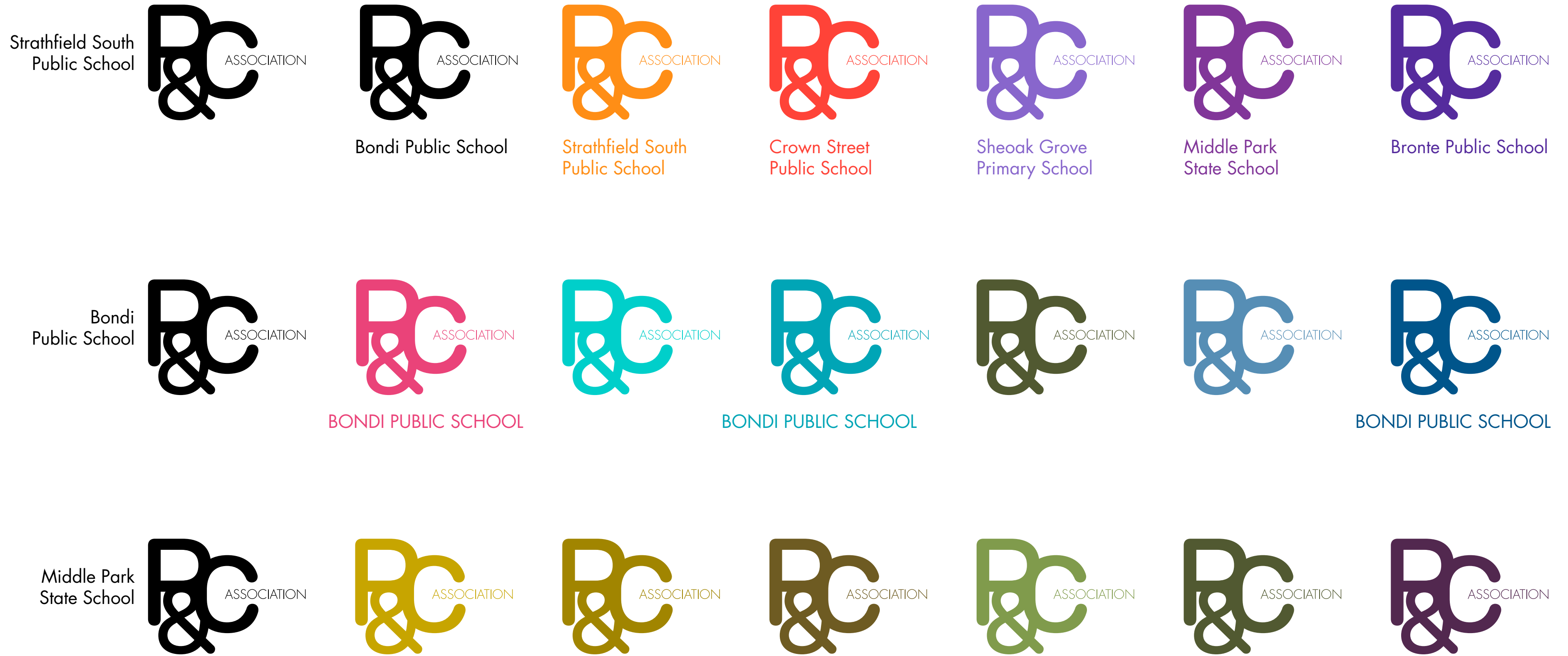


01. OUR LOGO

WITH SCHOOL NAMES

School name configurations with MONO logos.

School name in Futura Book font.



01. OUR LOGO

WITH
SCHOOL
NAMES

Bondi
Public School



Middle Park
State School



Strathfield South
Public School



Sheoak Grove
Primary School

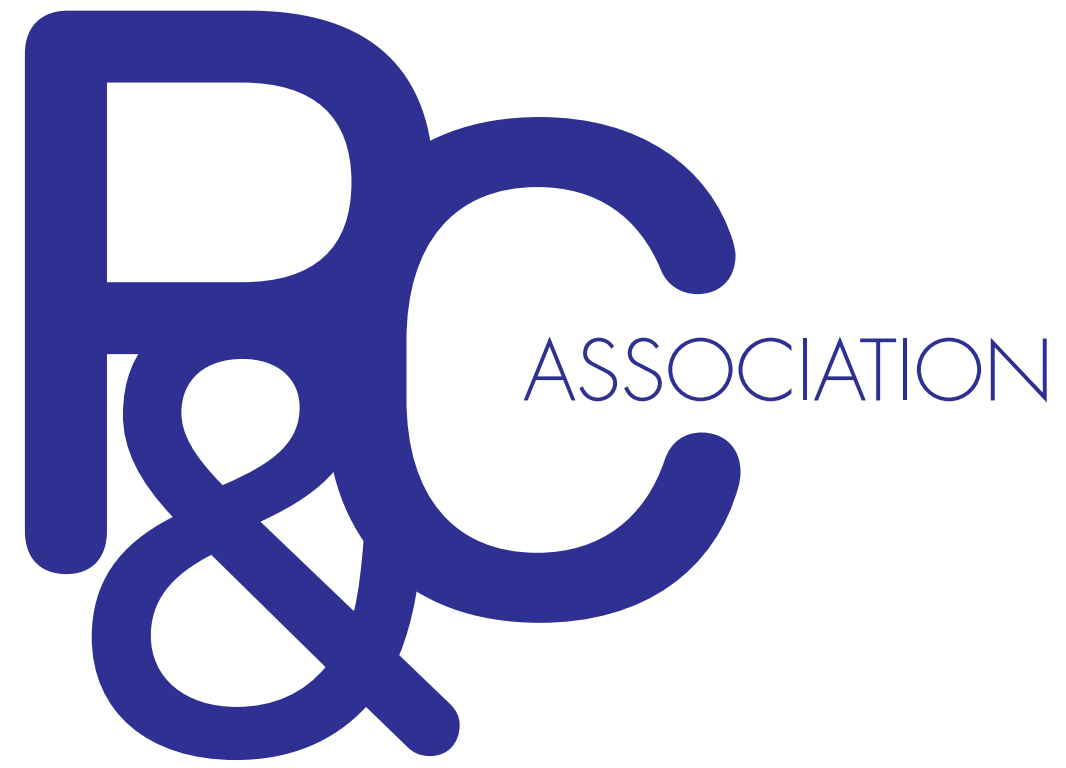


**THREE COLOUR
LOGO OPTIONS**
WITH SCHOOL NAME
TO THE LEFT

**01.
OUR
LOGO**

WITH
SCHOOL
NAMES

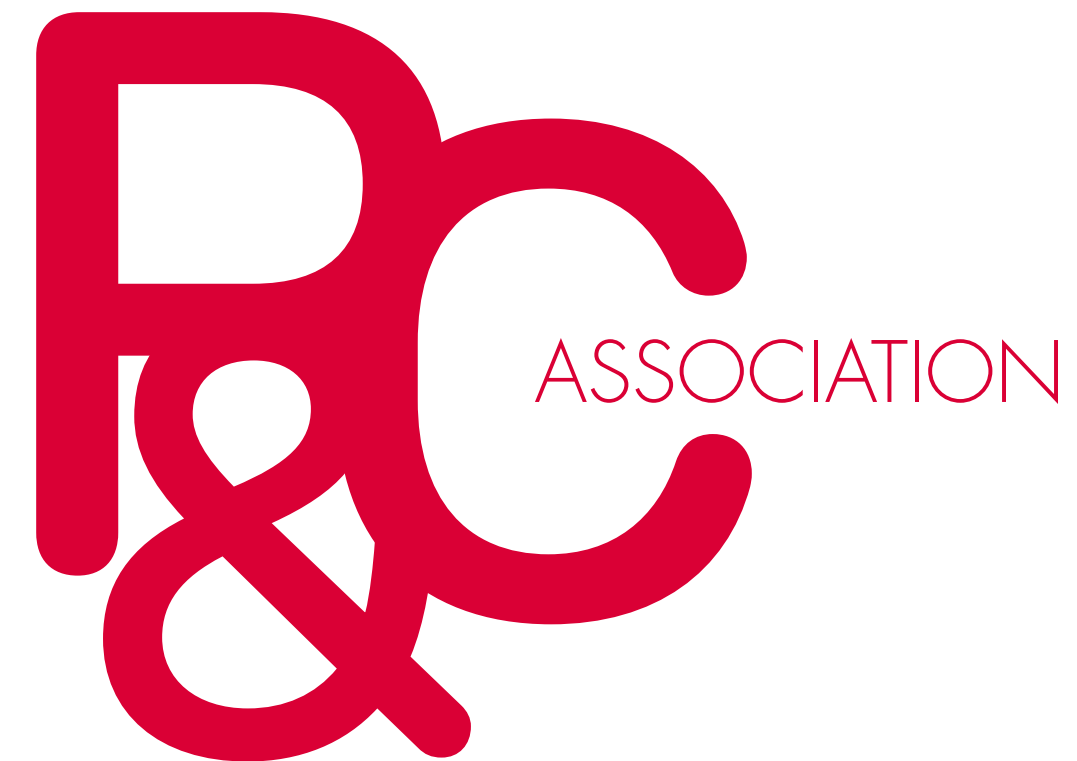
Bondi
Public School



Middle Park
State School



Strathfield South
Public School



Sheoak Grove
Primary School



**ONE COLOUR
LOGO OPTIONS**

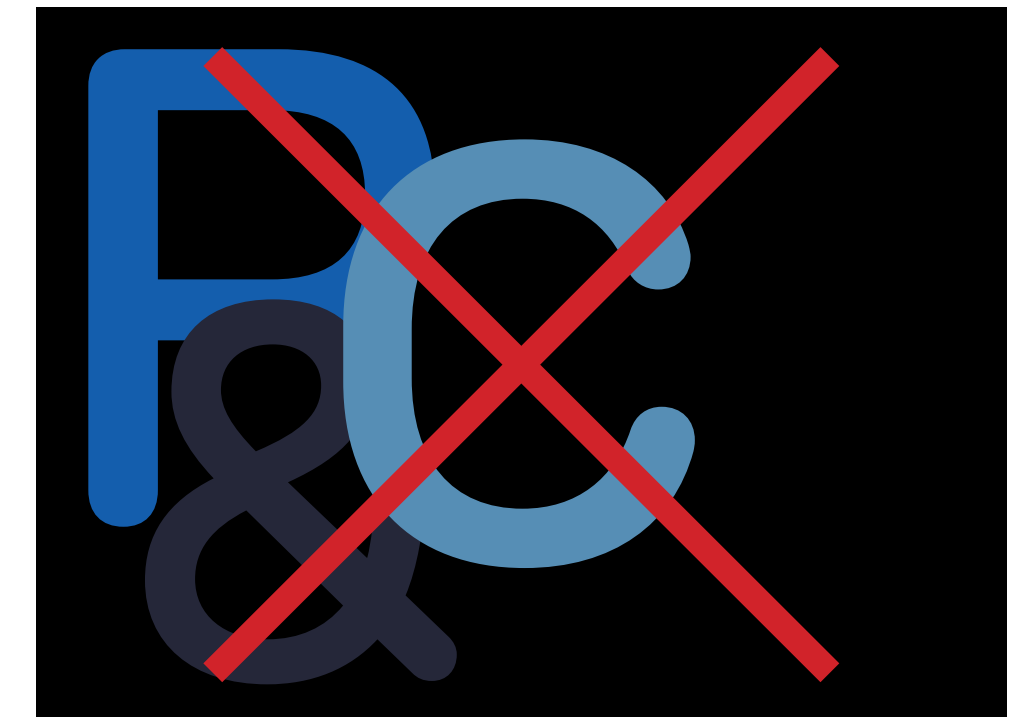
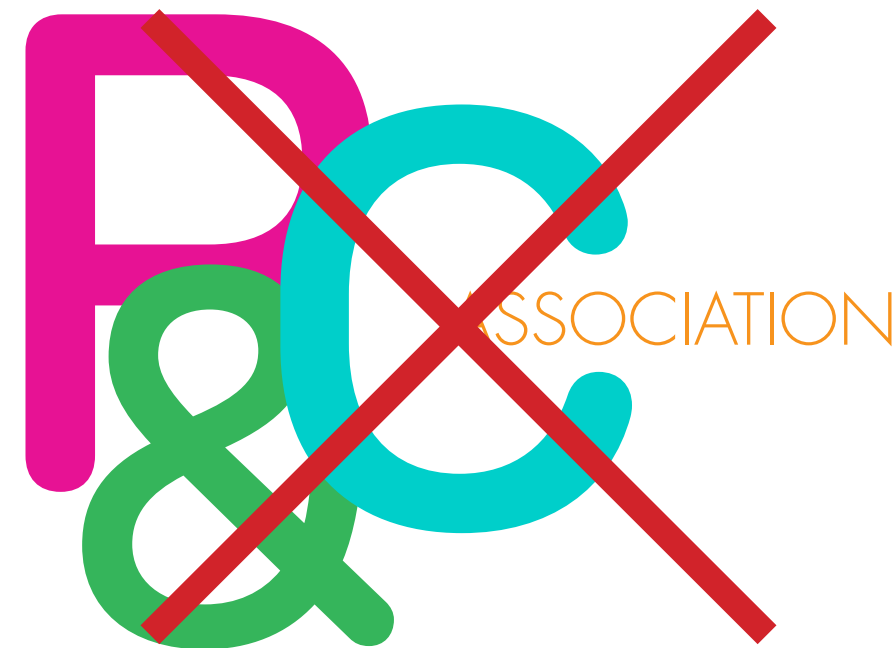
WITH SCHOOL NAME
TO THE LEFT

01. OUR LOGO

NO-NOs
(What not to do)

NEVER

- squish
- slant
- stretch
- colour outside of brand guidelines
- keyline/outline
- drop shadow
- put on a busy background
- put a full colour logo on black



01. OUR LOGO

A FEW
HELPFUL TIPS

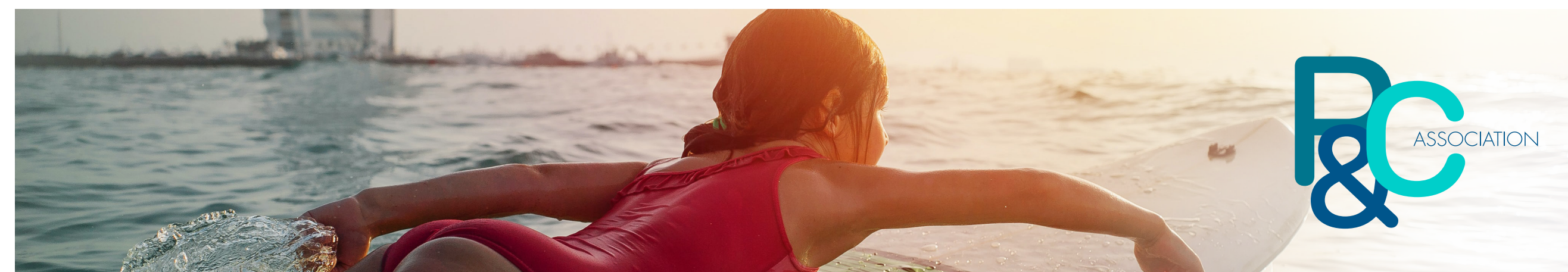
OUR MAIN, 3 COLOUR LOGO
SHOULD GO OVER WHITE
or a CLEAN, LIGHT PLAIN COLOURED
BACKGROUND.

*IT SHOULD NOT BE USED OVER
A DARK BACKGROUND.*

USE A WHITE OR PALE COLOURED
LOGO FOR DARKER BACKGROUNDS.

USE CONTRAST AND COLOUR POP.

USE SCALE TO ADD DRAMA.



Our Logo
Our Typography
Our Colours
Our Photography
Our Brand in Use

02. OUR TYPOGRAPHY

FOR PRINT
and any platform
or usage where you
aren't required to
use system fonts

HEADLINE FONT

Futura Bold

abcdefghijklmnopqrstuvxyz
ABCDEFGHIJKLMNOPQRSTUVWXYZ
0123456789

SUB HEADLINE FONT

Avenir Next Regular

abcdefghijklmnopqrstuvxyz
ABCDEFGHIJKLMNOPQRSTUVWXYZ
0123456789

INTRO PARA & BODY COPY FONT

Avenir Next Ultra Light
abcdefghijklmnopqrstuvxyz
ABCDEFGHIJKLMNOPQRST
UVWXYZ
0123456789

**Representing
parents' voices
through councillors
and delegates.**

Committed to a free, inclusive
public education system.

Open to all people irrespective of culture, gender,
academic ability and socio-economic class.

We create an environment that engages and empowers members and delivers valued services to diverse groups of parents and carers through respectful partnerships between staff and school communities. We create connections for thriving school communities in collaborative state, national and international partnerships with education authorities, community and corporate organisations. We Lead by example to foster a culture of respect and collaboration in decision-making to improve performance and create opportunities for members. We ensure financial sustainability through growth, development and diversification of income streams with business systems that meet the needs of members.

Headline 36/38pt (X)

Sub headline 24/26pt (60-66% of X)

Intro Para 14/16pt (38.8% of X)

Body copy 10/12pt (27-30% X)

02. OUR TYPOGRAPHY

SYSTEM.
USED ONLINE and DIGITALLY
WHERE FUTURA and AVENIR
FONTS ARE UNAVAILABLE.

HEADLINE
Arial Black

(if Black is unavailable use Bold)

SUB HEADLINE
Arial Regular

INTRO PARA
& BODY COPY
Arial Regular
in 85% black

Representing parents' voices through councillors and delegates.

Committed to a free, inclusive
public education system.

Open to all people irrespective of culture, gender, academic
ability and socio-economic class.

We create an environment that engages and empowers members and delivers valued services to diverse groups of parents and carers through respectful partnerships between staff and school communities. We create connections for thriving school communities in collaborative state, national and international partnerships with education authorities, community and corporate organisations. We Lead by example to foster a culture of respect and collaboration in decision-making to improve performance and create opportunities for members. We ensure financial sustainability through growth, development and diversification of income streams with business systems that meet the needs of members.

Headline 36/38pt (X)

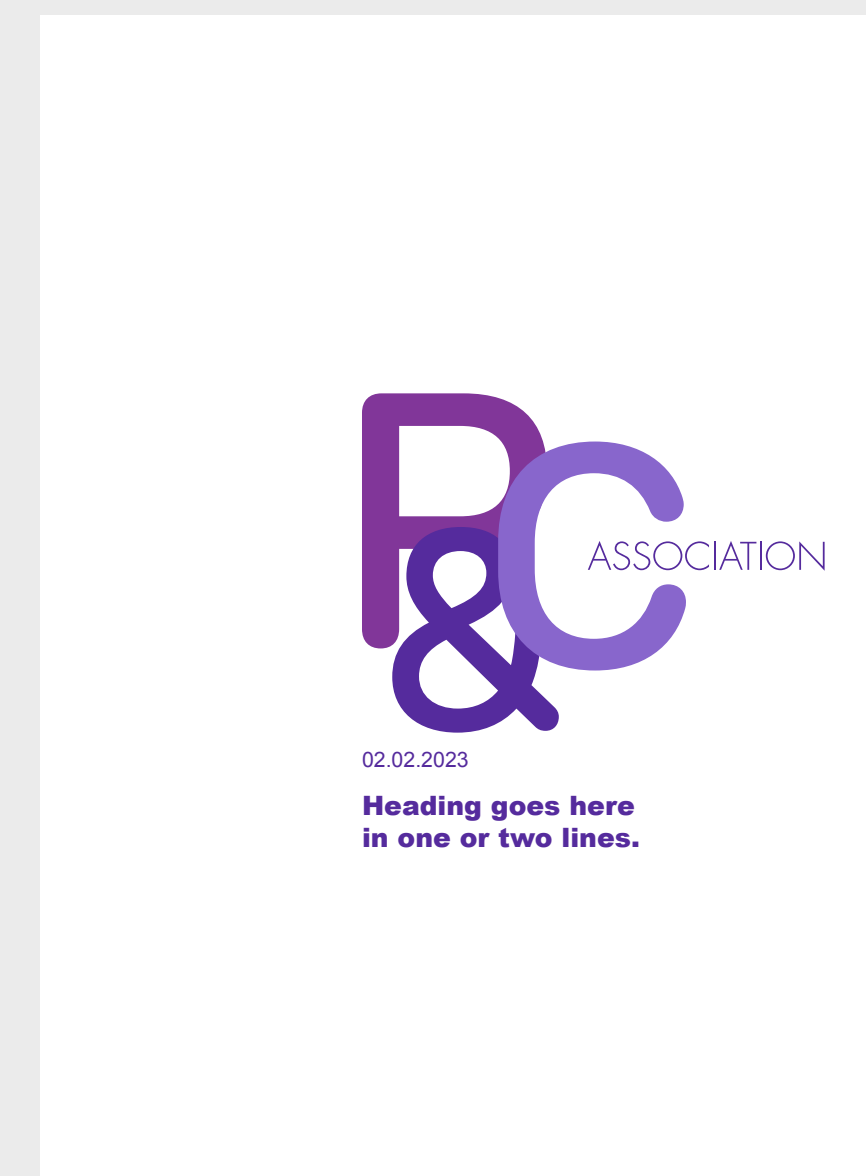
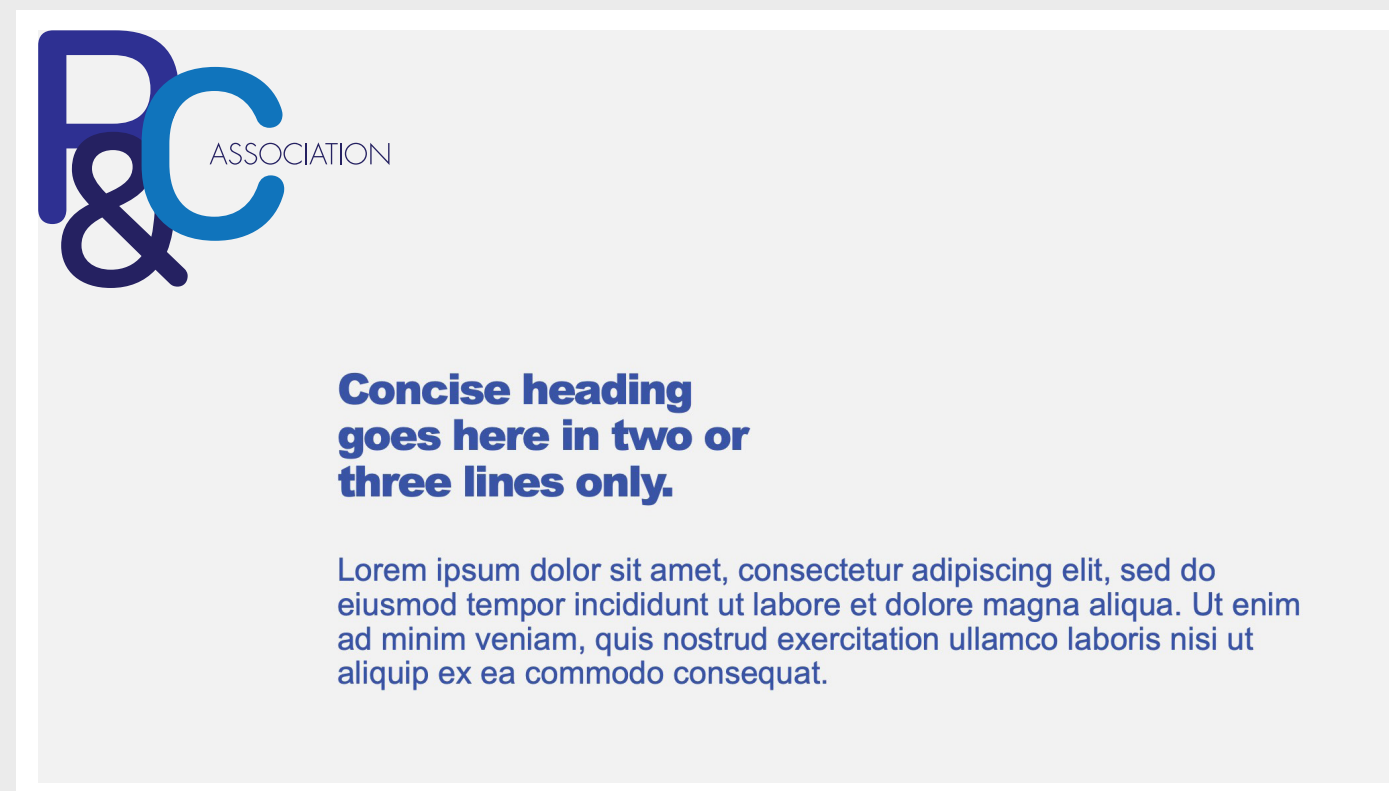
Sub headline 24/26pt (60-66% of X)

Intro Para 14/16pt (38.8% of X)

Body copy 10/14pt (27-30% X)

02. OUR TYPOGRAPHY

EXAMPLES



Our Logo

Our Typography

Our Colours

Our Photography

Our Brand in Use

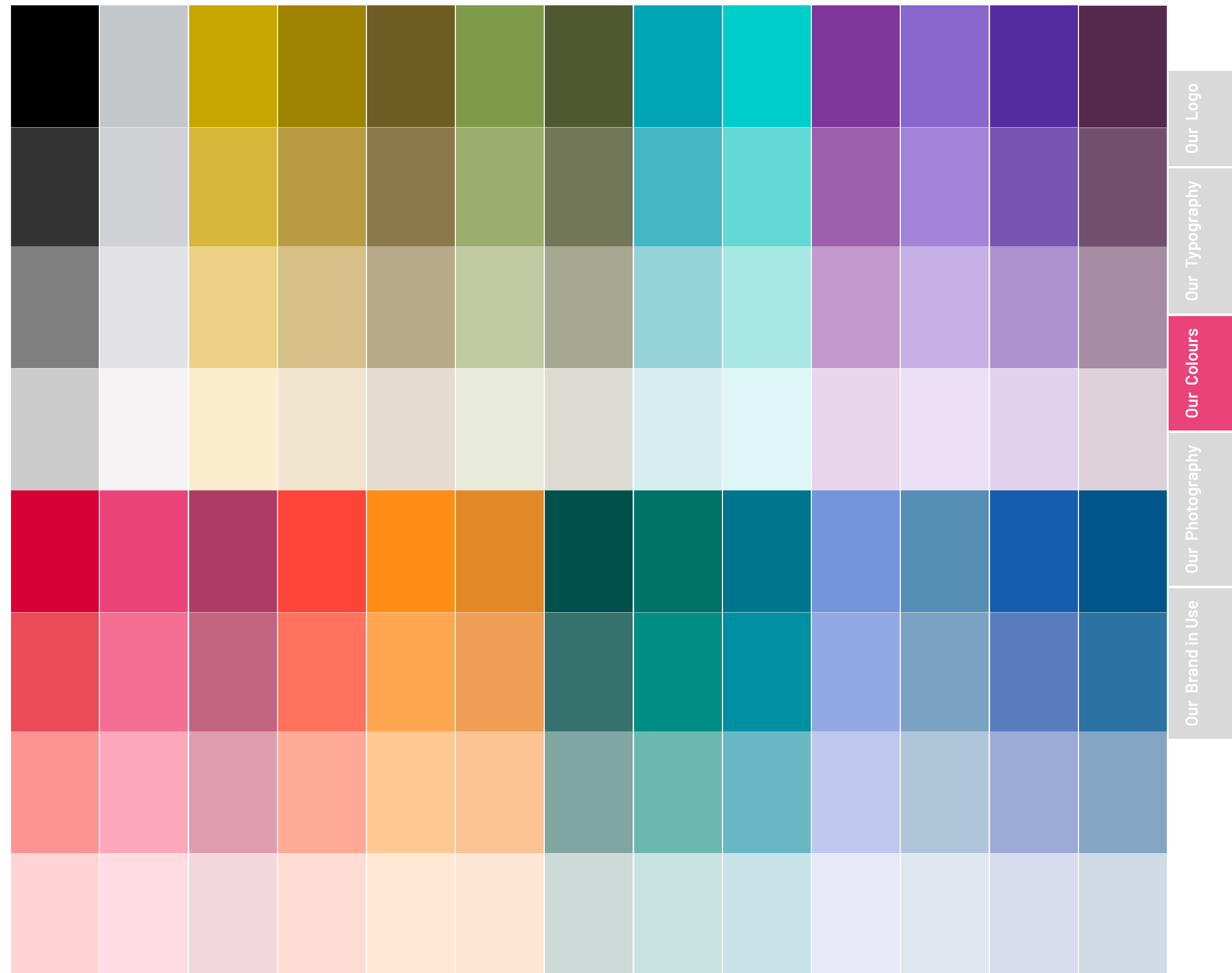
03. OUR COLOURS...

PALETTE

IF YOU FEEL ADVENTUROUS
COMBINE CONTRASTING &
COMPLIMENTARY COLOURS
FROM THE EXTENSIVE PALETTE.

OR STICK TO THE
14 PRE-DESIGNED PAlettes
THAT USE HUES.

ALTER OPACITY TO HELP WITH
LEGIBILITY OF TEXT OR ADD
INTEREST TO DESIGNS AT THE
DISCRETION OF THE DESIGNER.



03. OUR COLOURS...

PALETTE

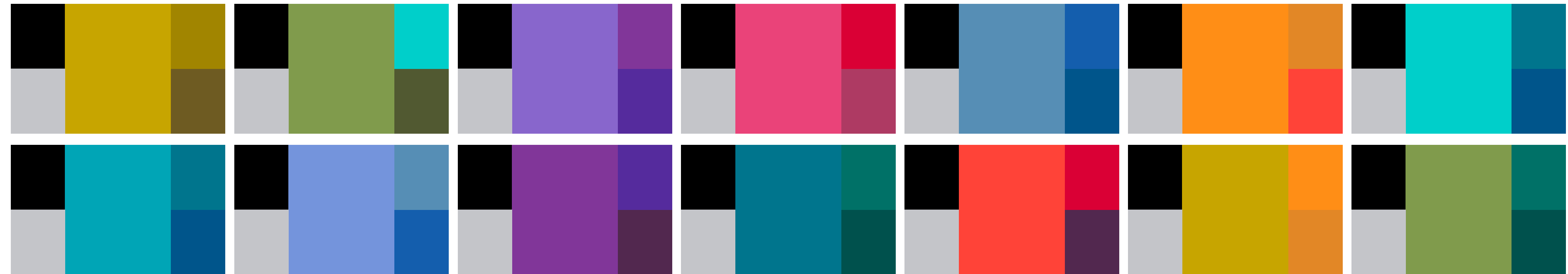
CHOOSE FROM ONE OF
14 PALETTES FOR YOUR
NEW BRAND IDENTITY



- Our Logo
- Our Typography
- Our Colours**
- Our Photography
- Our Brand in Use

COLOUR PALETTE

	BLACK	PMS 428	PMS 3975	PMS 3985	PMS 3995	PMS 576	PMS 574	PMS 7710	PMS 3252	PMS 2593	PMS 265	PMS 267	PMS 262	PMS 206	PMS 205	PMS 7433	PMS Warm Red	PMS 1495	PMS 7569	PMS 330	PMS 328	PMS 3145	PMS 7452	PMS 7454	PMS 7455	PMS 7462	
	BLACK	CMYK 24 17 16 0 RGB 193 197 200 HEX # c1c5c8	CMYK 30 28 100 1 RGB 189 166 0 HEX # bda600	CMYK 40 38 100 10 RGB 153 134 0 HEX # 998600	CMYK 51 50 100 32 RGB 105 92 33 HEX # 695c21	CMYK 58 22 91 4 RGB 120 156 74 HEX # 789c4a	CMYK 81 13 29 0 RGB 0 165 181 HEX # 4d5a31	CMYK 65 44 90 36 RGB 77 90 49 HEX # 00a5b5	CMYK 66 0 29 0 RGB 12 206 201 HEX # 0ccec9	CMYK 57 94 0 0 RGB 134 51 153 HEX # 863399	CMYK 53 68 0 0 RGB 146 100 204 HEX # 9264cc	CMYK 77 97 0 0 RGB 96 38 158 HEX # 61279e	CMYK 67 90 40 35 RGB 83 40 79 HEX # 542950	CMYK 10 100 78 2 RGB 212 0 54 HEX # d40036	CMYK 10 100 78 2 RGB 212 0 54 HEX # e6427b	CMYK 29 91 42 7 RGB 172 57 100 HEX # ac3964	CMYK 0 87 80 0 RGB 255 68 56 HEX # ff4539	CMYK 0 54 95 0 RGB 255 144 21 HEX # ff8f13	CMYK 13 52 100 1 RGB 218 136 36 HEX # db8925	CMYK 95 45 65 37 RGB 0 82 76 HEX # 00514c	CMYK 100 30 64 16 RGB 0 114 104 HEX # 007268	CMYK 100 36 38 8 RGB 0 117 141 HEX # 00768e	CMYK 51 38 0 0 RGB 128 147 220 HEX # 8093dc	CMYK 66 36 14 0 RGB 95 142 181 HEX # 5f8eb5	CMYK 85 69 0 0 RGB 58 92 173 HEX # 385cad	CMYK 100 71 22 5 RGB 0 83 139 HEX # 00548b	
80%																											
50%																											
20%																											



Our Logo
Our Typography
Our Colours
Our Photography
Our Brand in Use

04. OUR PHOTOGRAPHY

- . ACTIVE
- . DIVERSE
- . INCLUSIVE
- . ASPIRATIONAL
- . UPBEAT

REDUCED COLOUR
PALETTE IN
BACKGROUNDS -

WITH COLOUR POP
FOREGROUND

NOT TOO BUSY
AND NO PATTERN CLASH



Our Logo

Our Typography

Our Colours

Our Photography

Our Brand in Use

CUSTOMISE TO USE
THE COLOUR PALETTE YOU
HAVE CHOSEN FOR YOUR
SCHOOL'S BRAND



STATIONERY /LETTERHEAD + CARD + FOLDER WITH 3 COLOUR LOGO PRINT

Our Logo
Our Typography
Our Colours
Our Photography
Our Brand in Use



ASSOCIATION

Bondi Public School

Lorem ipsum dolor sit amet.

Consectetur adipiscing elit, sed do eiusmod tempor incididunt.



STRATHFIELD SOUTH PUBLIC SCHOOL

Lorem ipsum dolor sit amet.

Consectetur adipiscing elit, sed do eiusmod tempor incididunt.



Sheok Grove Primary School

Lorem ipsum dolor sit amet.

Consectetur adipiscing elit, sed do eiusmod tempor incididunt.

Our Logo

Our Typography

Our Colours

Our Photography

Our Brand in Use

PRESENTATIONS /PPT

TEMPLATE SUPPLIED

PC & C ASSOCIATION
School Name Here

Heading here in two or three lines only in Arial black

Body copy here in Arial regular. Keep it short. Lorem ipsum dolor sit amet, consectetur adipiscing elit, sed do eiusmod tempor incididunt ut labore et dolore magna.

PC & C ASSOCIATION
Your School Name Here

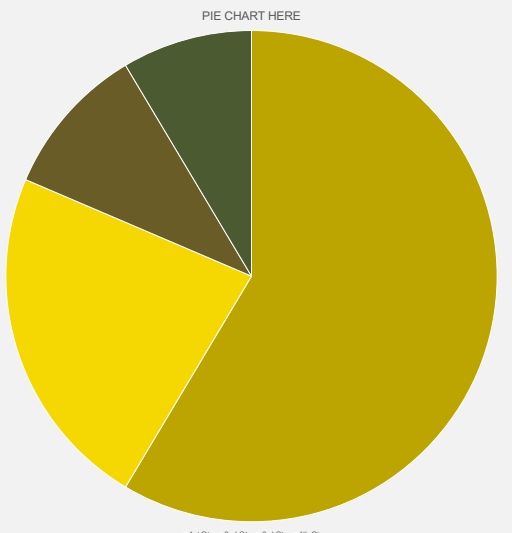
A simple heading goes here in one or two lines.

Body copy goes here in one or two lines or a paragraph. Body copy goes here in one or two lines or a paragraph. Body copy goes here in one or two lines or a paragraph. Body copy goes here in one or two lines or a paragraph. Body copy goes here in one or two lines or a paragraph.

PC & C ASSOCIATION

Heading goes here in two lines.

Body copy goes here in a few sentences or a paragraph. Body copy goes here in a few sentences or a paragraph. Body copy goes here in a few sentences or a paragraph.



PIE CHART HERE

PC & C ASSOCIATION
School Name Here

Heading goes here in Arial black

Body copy here in a paragraph or a sentence or two. Lorem ipsum dolor sit amet, consectetur adipiscing elit, sed do eiusmod tempor incididunt ut labore et dolore magna aliqua. Ut enim ad minim veniam, quis nostrud.

PC & C ASSOCIATION
Your School Name Here

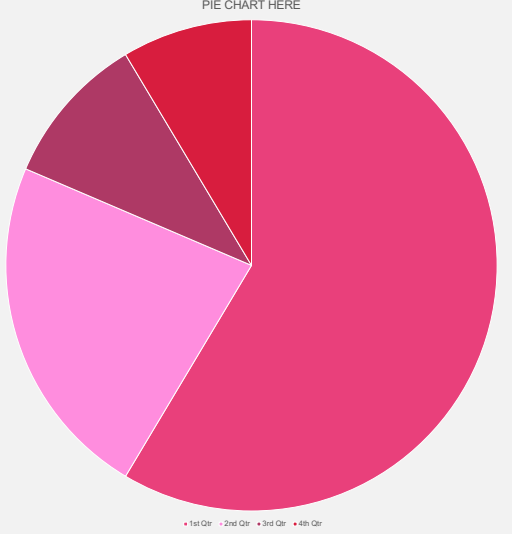
Heading goes here in one or two lines.

Body copy goes here in one or two lines or as a paragraph. Body copy goes here in one or two lines or as a paragraph. Body copy goes here in one or two lines or as a paragraph. Body copy goes here in one or two lines or as a paragraph. Body copy goes here in one or two lines or as a paragraph. Body copy goes here in one or two lines or as a paragraph. Body copy goes here in one or two lines or as a paragraph.

PC & C ASSOCIATION

Heading goes here in two lines.

Body copy goes here in a few sentences or a paragraph. Body copy goes here in a few sentences or a paragraph. Body copy goes here in a few sentences or a paragraph.



PIE CHART HERE

PC & C ASSOCIATION
Your School Name Here

Heading goes here in one or two lines.

Body copy goes here in a paragraph or a few sentences. Body copy goes here in a paragraph or a few sentences. Body copy goes here in a paragraph or a few sentences. Body copy goes here in a paragraph or a few sentences. Body copy goes here in a paragraph or a few sentences.

PC & C ASSOCIATION
Your School Name Here

A simple heading goes here in one or two lines.

Body copy goes here in a few sentences or a paragraph. Body copy goes here in a few sentences or a paragraph. Body copy goes here in a few sentences or a paragraph. Body copy goes here in a few sentences or a paragraph. Body copy goes here in a few sentences or a paragraph.

PC & C ASSOCIATION
Your School Name Here

A simple heading goes here in one or two lines.

Body copy goes here in a few sentences or a paragraph. Body copy goes here in a few sentences or a paragraph. Body copy goes here in a few sentences or a paragraph. Body copy goes here in a few sentences or a paragraph. Body copy goes here in a few sentences or a paragraph.

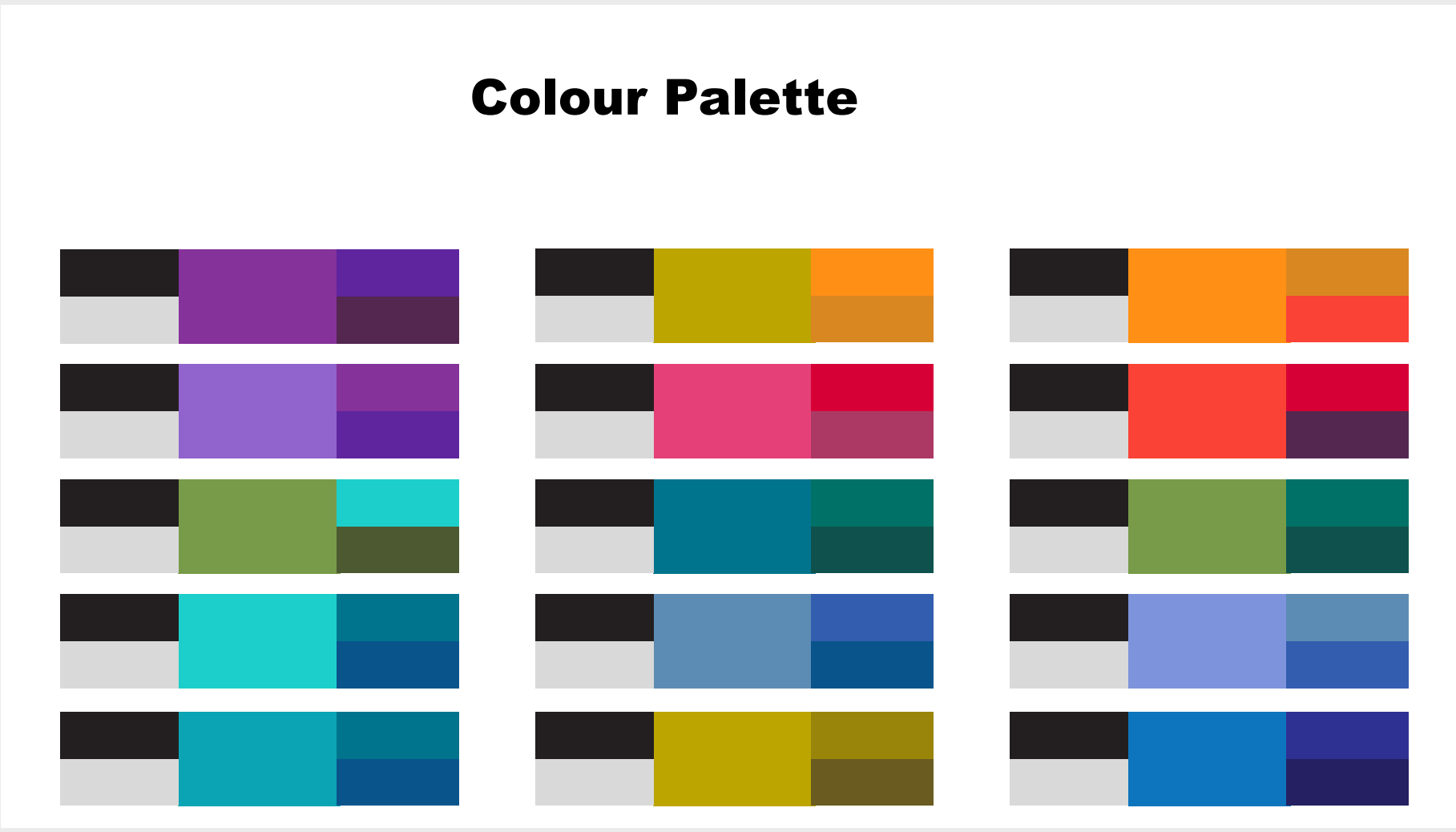
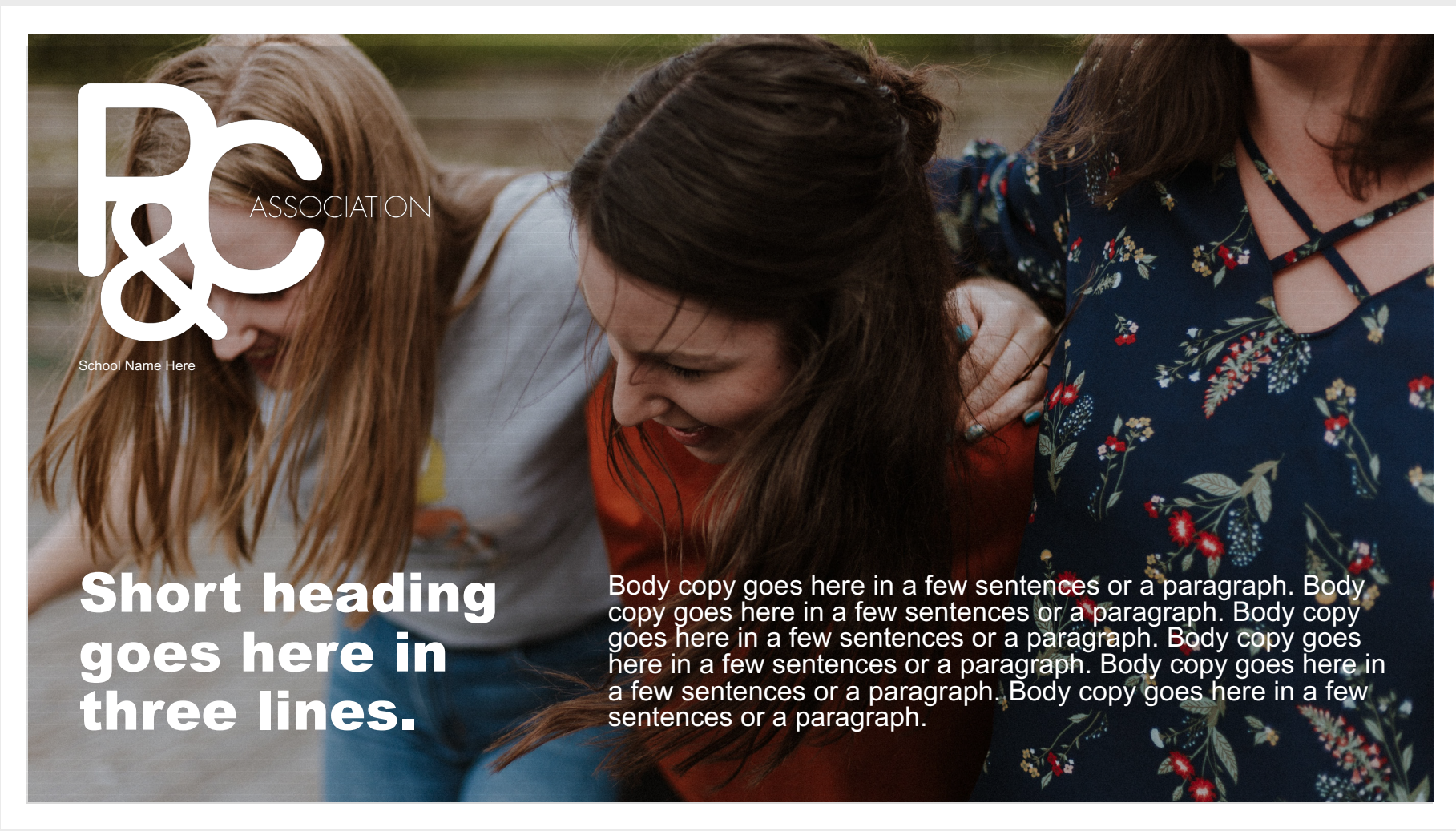
Our Logo

Our Typography

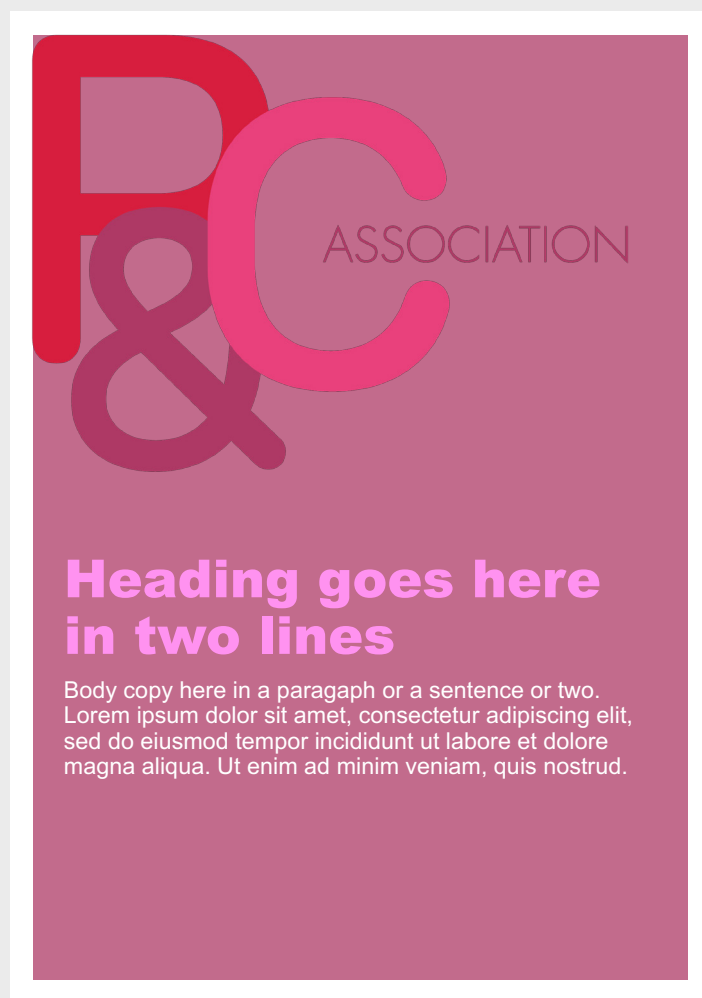
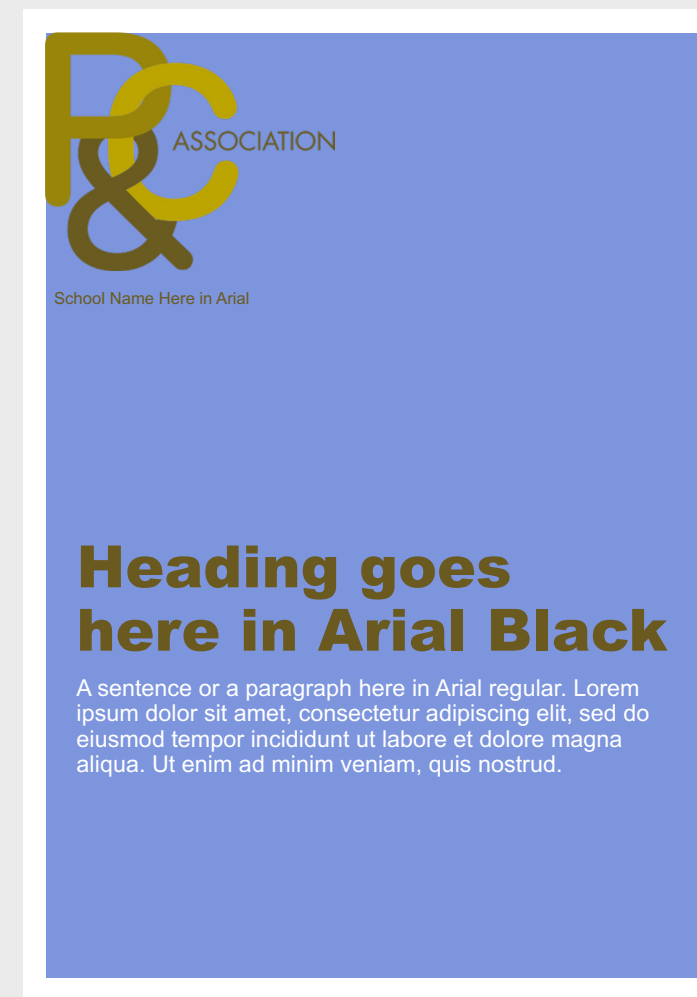
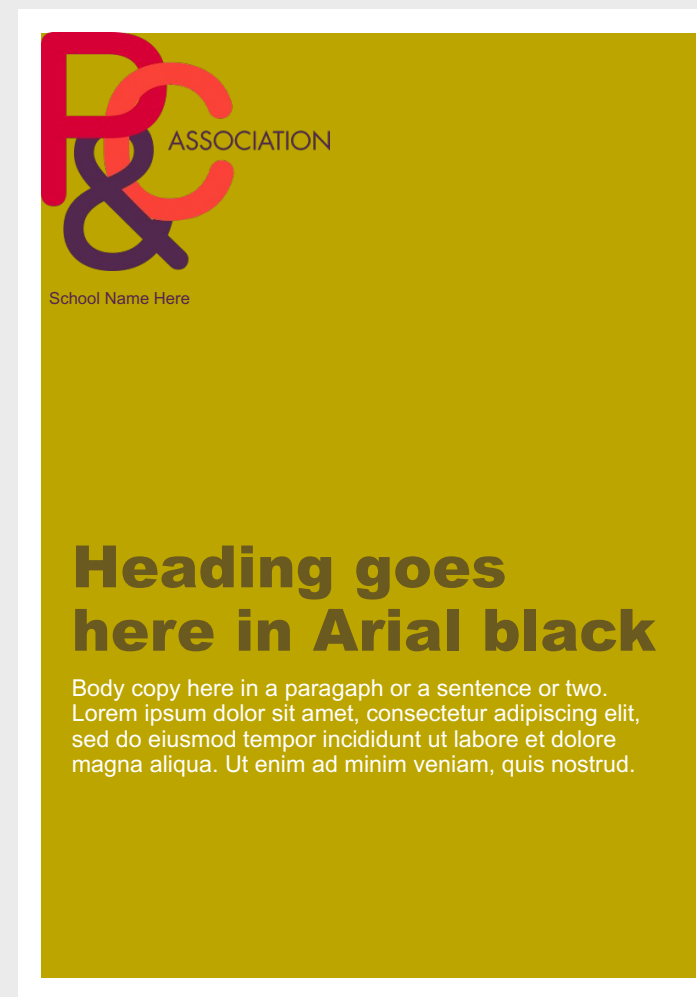
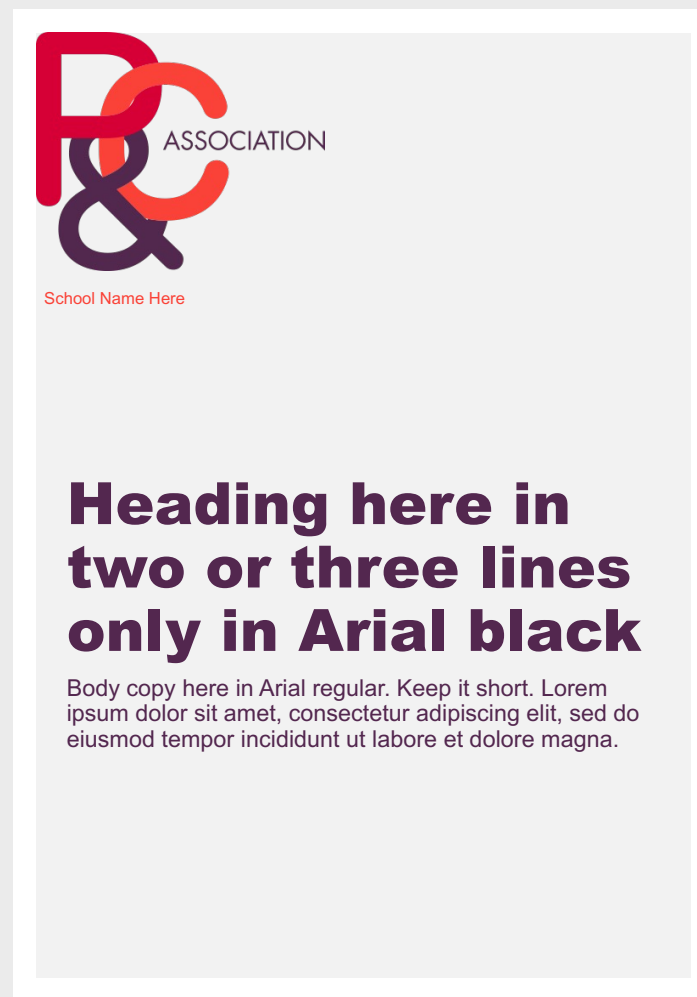
Our Colours

Our Photography

Our Brand in Use



PRESENTATIONS /PPT
TEMPLATE SUPPLIED

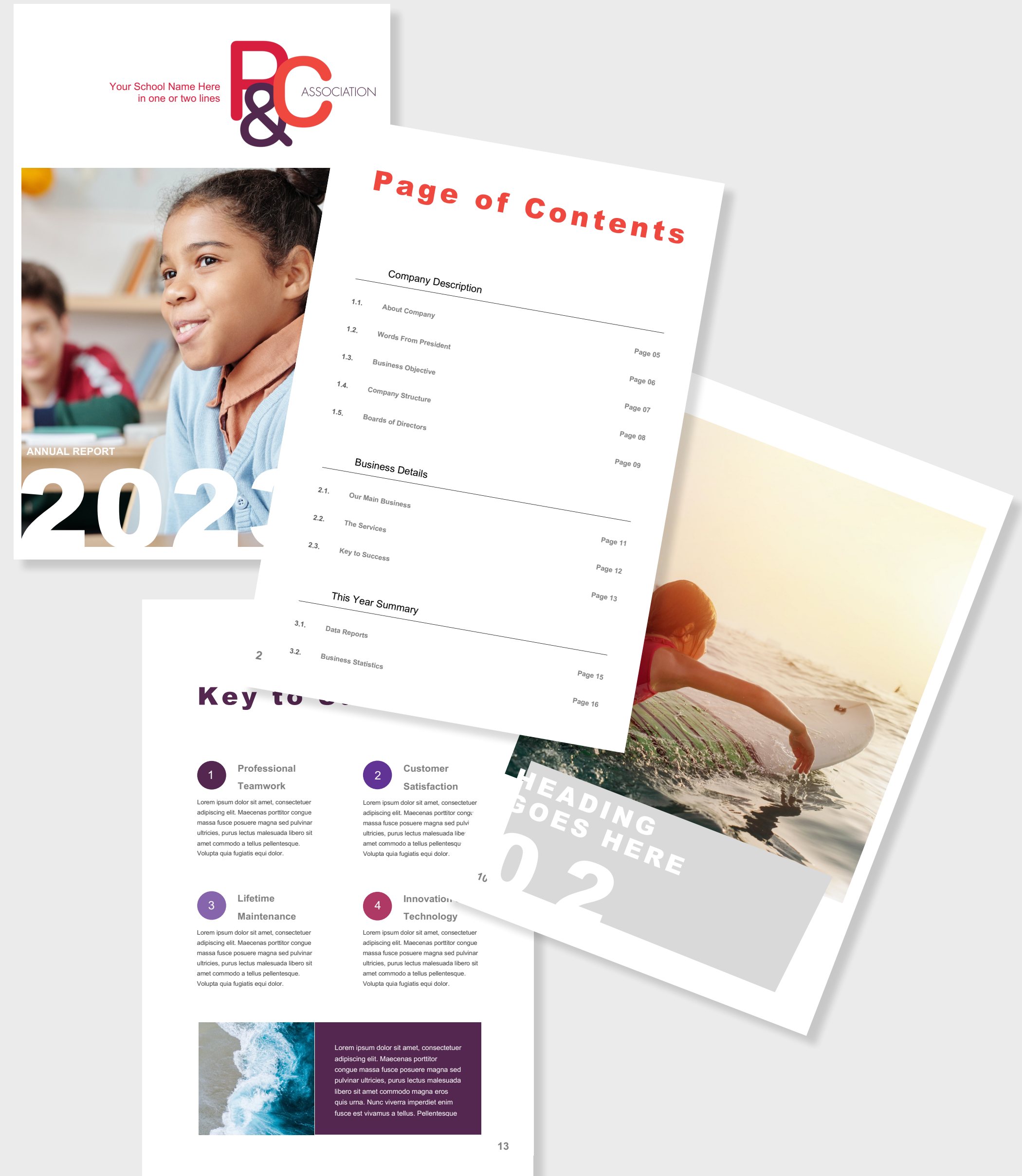
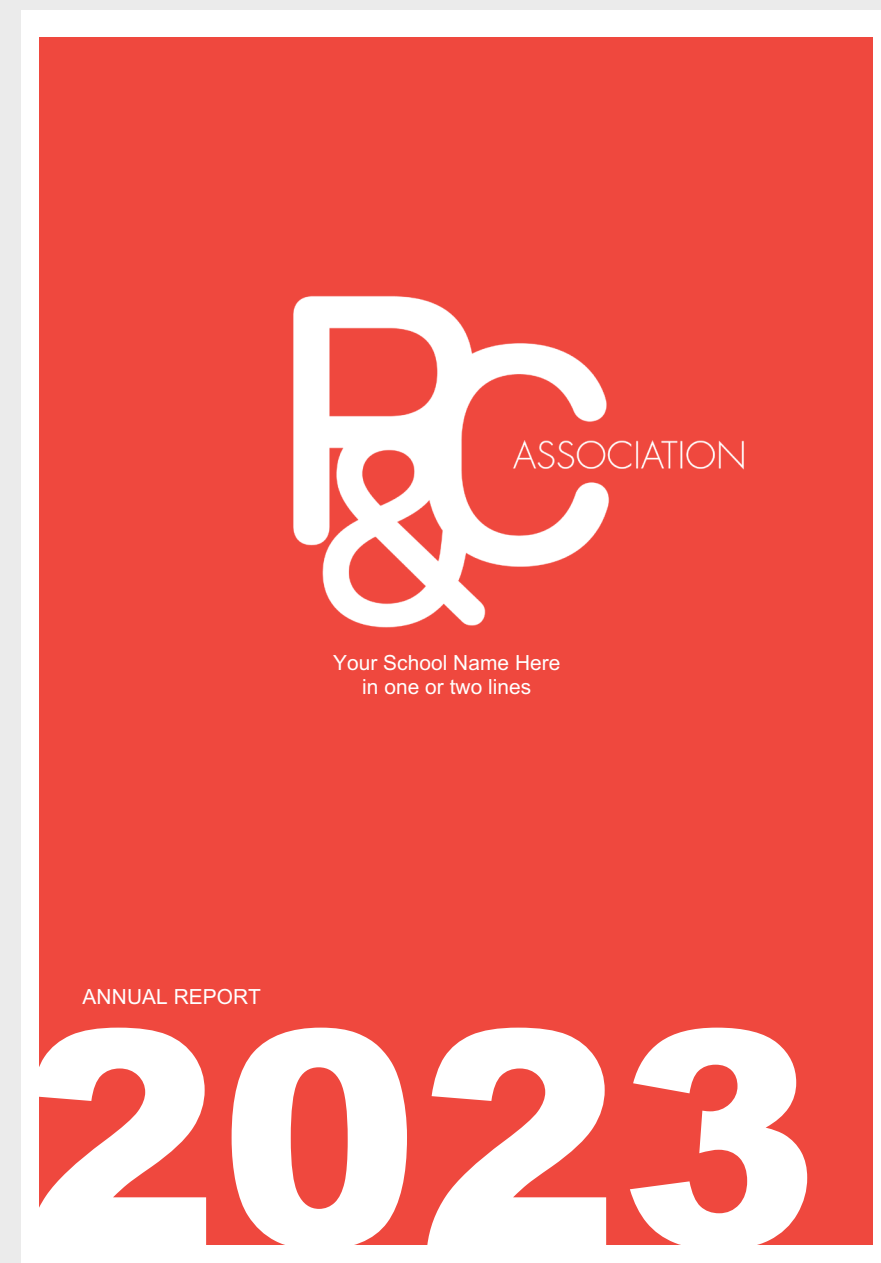


**A3 POSTERS
/PPT**
TEMPLATE SUPPLIED

Our Logo
Our Typography
Our Colours
Our Photography
Our Brand in Use

ANNUAL REPORT

WORD DOC EXAMPLE SUPPLIED



Our Logo
Our Typography
Our Colours
Our Photography
Our Brand in Use

LETTERHEAD

WORD DOC EXAMPLE SUPPLIED

Your School Name
goes here in two lines



12.02.2023

Dear Name here,

Lorem ipsum dolor sit amet, consectetur adipiscing elit, sed do eiusmod tempor incididunt ut labore et dolore magna aliqua. Ut enim ad minim veniam, quis nostrud exercitation ullamco laboris nisi ut aliquip ex ea commodo consequat. Duis aute irure dolor in reprehenderit in voluptate velit esse cillum dolore eu fugiat nulla pariatur. Excepteur sint occaecat cupidatat non proident, sunt in culpa qui officia deserunt mollit anim id est laborum.

Sed ut perspiciatis unde omnis iste natus error sit voluptatem accusantium doloremque laudantium, totam rem aperiam, eaque ipsa quae ab illo inventore veritatis et quasi architecto beatae vitae dicta sunt explicabo. Nemo enim ipsam voluptatem quia voluptas sit aspernatur aut odit aut fugit, sed quia consequuntur magni dolores eos qui ratione voluptatem sequi nesciunt. Neque porro quisquam est, qui dolorem ipsum quia dolor sit amet, consectetur, adipisci velit, sed quia non numquam eius modi tempora incidunt ut labore et dolore magnam aliquam quaerat voluptatem. Ut enim ad minima veniam, quis nostrum exercitationem ullam corporis suscipit laboriosam, nisi ut aliquid ex ea commodi consequatur? Quis autem vel eum iure reprehenderit qui in ea voluptate velit esse quam nihil molestiae consequatur, vel illum qui dolorem eum fugiat quo voluptas nulla pariatur.

Lorem ipsum dolor sit amet, consectetur adipiscing elit, sed do eiusmod tempor incididunt ut labore et dolore magna aliqua. Ut enim ad minim veniam, quis nostrud exercitation ullamco laboris nisi ut aliquip ex ea commodo consequat. Duis aute irure dolor in reprehenderit in voluptate velit esse cillum dolore eu fugiat nulla pariatur. Excepteur sint occaecat cupidatat non proident, sunt in culpa qui officia deserunt mollit anim id est laborum.

Best,

Name here

Address goes here
contact_name@your_email_address.com | ph: +12 000 000 000
Any other contact details – total using three lines only



INVOICE

Your School Name Goes here in one or two lines

123 Street Address, City, State,
Zip/Post
Website | Email Address
Phone Number

BILL TO

<Contact Name>
<Client Company Name>
<Address>
<Phone, Email>

SHIP TO

<Name / Dept>
<Client Company Name>
<Address>
<Phone>

Invoice No: #INV00001

Invoice Date: 11/11/11

Due Date: 12/12/12

DESCRIPTION	QTY	UNIT PRICE	TOTAL
			0.00
			0.00
			0.00
			0.00
			0.00
			0.00
			0.00
			0.00
			0.00
			0.00
			0.00
			0.00
			0.00
			0.00
			0.00

SUBTOTAL	0.00
DISCOUNT	0.00
SUBTOTAL LESS DISCOUNT	0.00
TAX RATE	0.00%
TOTAL TAX	0.00
SHIPPING/HANDLING	0.00
Balance Due \$	-

Thank you for your business!

Terms & Instructions
<Add payment instructions here, e.g: bank, paypal...>
<Add terms here, e.g: warranty, returns policy...>

INVOICE
EXCEL DOC EXAMPLE SUPPLIED

MINUTES

WORD DOC EXAMPLE SUPPLIED

Your School Name
Goes Here in two lines



AGM MINUTES

Date:	
Time:	
Place:	

Attendees:	
Apologies:	
Proxies:	

Item	Description
1	Welcome and introductions
2	Apologies
3	Review of actions from previous annual general meeting
	Acceptance of minutes of previous annual general meeting
4	Proposed resolution: That the minutes of the [reporting period] annual general meeting be accepted.
	Moved: _____ Seconded: _____
	Passed/Not passed
5	President/Chair's report
6	Treasurer's report
7	Questions to directors
	Proposed resolutions
	Resolved/Not resolved
	Moved/Seconded
	Passed/Not passed

CUSTOMISE TO USE
THE COLOUR PALETTE YOU
HAVE CHOSEN FOR YOUR
SCHOOL'S BRAND



Strathfield South
Public School

MERCHANDISE /LANYARD

WITH 3 COLOUR LOGO PRINT
just supply vector logo (Ai, PDF, EPS)
to printer to size accordingly



Our Logo

Our Typography

Our Colours

Our Photography

Our Brand in Use



MERCHANDISE /CAP/BAG

WITH 1 COLOUR LOGO PRINT
just supply vector logo (Ai, PDF, EPS)
to printer to size accordingly



- Our Logo
- Our Typography
- Our Colours
- Our Photography
- Our Brand in Use**

MERCHANDISE /T SHIRT

WITH 3 COLOUR LOGO PRINT
just supply vector logo (Ai, PDF, EPS)
to printer to size accordingly



Our Logo

Our Typography

Our Colours

Our Photography

Our Brand in Use

CUSTOMISE TO USE
THE COLOUR PALETTE YOU
HAVE CHOSEN FOR YOUR
SCHOOL'S BRAND

USE THE TEMPLATE
AS A GUIDE &
ADD YOUR OWN TEXT



MERCHANDISE /BADGE

EXAMPLES SUPPLIED WITH
BLEED AS EPS, .AI, PDF

Our Logo

Our Typography

Our Colours

Our Photography

Our Brand in Use



Bondi Public School

Certificate of Appreciation

awarded to

JANICE SMITH

Lorem ipsum dolor sit amet, consectetur adipiscing elit, sed do eiusmod tempor incididunt ut labore et dolore magna aliqua. Ut enim ad minim veniam, quis nostrud exercitation ullamco laboris nisi.

Janice Smith
PRINCIPAL

Malcolm Smith
DEPUTY PRINCIPAL



Middle Park State School

Certificate of Appreciation

awarded to

JANICE SMITH

Lorem ipsum dolor sit amet, consectetur adipiscing elit, sed do eiusmod tempor incididunt ut labore et dolore magna aliqua. Ut enim ad minim veniam, quis nostrud exercitation ullamco laboris nisi.

Janice Smith
PRINCIPAL

Malcolm Smith
DEPUTY PRINCIPAL

CERTIFICATES

EXAMPLES SUPPLIED AS PACKAGED INDESIGN FILES



Bondi Public School

Life Membership Certificate

awarded to

JANICE SMITH

Lorem ipsum dolor sit amet, consectetur adipiscing elit, sed do eiusmod tempor incididunt ut labore et dolore magna aliqua. Ut enim ad minim veniam, quis nostrud exercitation ullamco laboris nisi.

Janice Smith
PRINCIPAL

Malcolm Smith
DEPUTY PRINCIPAL




Middle Park State School

Life Membership Certificate

awarded to

JANICE SMITH

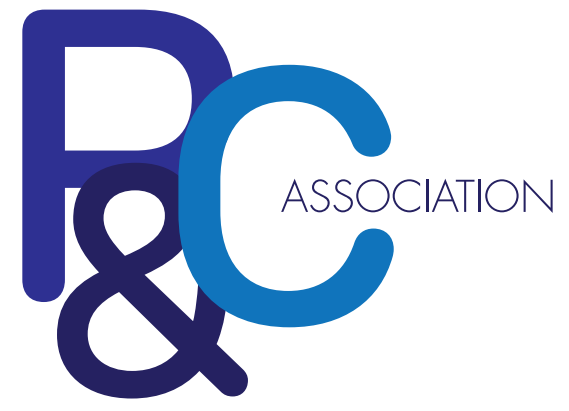
Lorem ipsum dolor sit amet, consectetur adipiscing elit, sed do eiusmod tempor incididunt ut labore et dolore magna aliqua. Ut enim ad minim veniam, quis nostrud exercitation ullamco laboris nisi.


Janice Smith
PRINCIPAL


Malcolm Smith
DEPUTY PRINCIPAL

CERTIFICATES

EXAMPLES SUPPLIED AS PACKAGED INDESIGN FILES



Sheak Grove
Primary School

MERCHANDISE /APRONS

WITH 3 COLOUR LOGO
PRINT or EMBROIDERY -
just supply vector logo (Ai, PDF, EPS)
to printer to size accordingly



Our Logo

Our Typography

Our Colours

Our Photography

Our Brand in Use



ASSOCIATION

Thank you